



Positioning Solutions since 1972

2-Axis Positioners



2-Axis Positioners

Efficient and precise welding depends on the right positioning.

PrestonEastin two-axis welding positioners are ideal for construction, OEM, oil & gas, and contract manufacturing applications where increased efficiency and safe operation is strongly desired. Our robust product line delivers precise, repeatable, and safe operation. Better positioning yields higher quality welds, improved productivity, and a lower risk of operator injury.

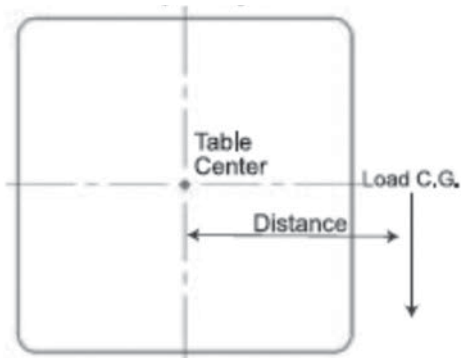


Positioner Models

| Positioner Model | Load Capacity | Inherent Overhang | Rotational Torque | Tilt Torque | RPM | Table Size |
|------------------|-------------------|-------------------|-------------------|-------------|-----------|--------------|
| PA-1 MT | 100 lbs. @ 1" | N/A | 102 | N/A | 0.3-9.0 | 12" Diameter |
| PA-2 MT | 250 lbs. @ 2" | N/A | 625 | N/A | 0.3-7.8 | 16" Diameter |
| PA-5 MT | 500 lbs. @ 4" | N/A | 2,000 | N/A | 0.2-3.7 | 22" Diameter |
| PA-5 PT | 500 lbs. @ 4" | 3.81" | 2,000 | 3,905 | .02-3.7 | 22" Diameter |
| PA-15 HD4 | 1500 lbs. @ 4" | 4.25" | 6,000 | 12,375 | .12-3.6 | 24" Diameter |
| PE-30 HD6 | 3000 lbs. @ 6" | 5" | 18,000 | 33,000 | 0.2-2.8 | 30" X 30" |
| PE-45 HD12 | 4500 lbs. @ 12" | 6" | 54,000 | 81,000 | .073-1.46 | 42" X 42" |
| PE-60 HD12 | 6000 lbs. @ 12" | 7" | 72,000 | 114,000 | 0.2-2.8 | 42" X 42" |
| PA-100 HD12 | 10,000 lbs. @ 12" | 9" | 120,000 | 210,000 | .03-.86 | 54" X 54" |
| PA-160 HD12 | 16,000 lbs. @ 12" | 9.25" | 192,000 | 340,000 | .03-.68 | 60" X 60" |
| PE-240 HD12 | 24,000 lbs. @ 12" | 9.75" | 288,000 | 522,000 | .03-.53 | 60" X 60" |

Sizing Your Positioner

Positioner Rotating Capacity



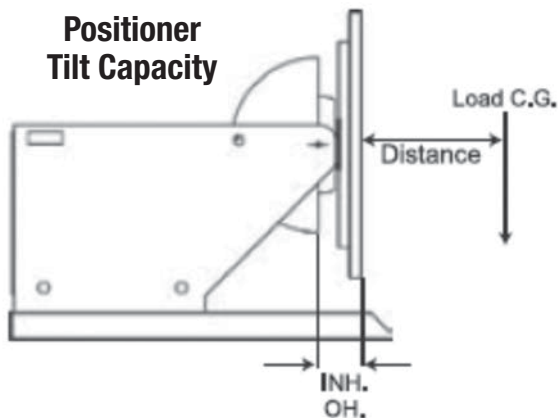
Rotational Torque Calculation

1. Determine total weight of work piece, including fixtures.
2. Calculate the load center of gravity distance (LOAD C.G.) in inches, from center of table.
3. Multiply information from step 1 times the information in step 2 for required rotational torque.
4. Compare the required rotational torque with the rated rotational torque from the table.
5. Select a positioner with a rotational torque rating equal to or greater than the required rotational torque.

$$\text{LOAD} \times \text{DISTANCE} = \text{ROTATIONAL TORQUE REQUIREMENT}$$

$$(\text{LBS.}) \times (\text{INCHES}) = (\text{LBS.} - \text{INCHES})$$

Positioner Tilt Capacity



Tilt Torque Calculation

1. Determine total weight of work piece, including fixtures.
2. Calculate the load center of gravity distance (LOAD C.G.) in inches, from the table face, including the fixture.
3. Add inherent overhang distance (INH. OH.) in inches to step 2.
4. Multiply information from step 1 times the sum of step 2 and step 3 to determine the required tilt torque.
5. Compare the required tilt torque with the rated tilt torque from the table below.
6. Select a positioner with a tilt torque rating equal to or greater than the required tilt torque.

$$\text{LOAD} \times \text{DISTANCE} + \text{INHERENT OVERHANG} = \text{TORQUE RATING}$$

$$(\text{LBS.}) \times (\text{INCHES}) + (\text{INH. OH.}) = (\text{LBS.} - \text{INCHES})$$



PA-1 MT, 2-Axis Welding Positioner

The PA-1 MT, 2-Axis Welding Positioner is ideal for construction, OEM, oil & gas, and contract manufacturing applications. It delivers precise, repeatable, and safe operation. Better positioning yields higher quality welds, improved productivity, and a lower risk of operator injury.

PRESTON-EASTIN MODEL PA-1 MT PRODUCT DATA

Capacity

- **Horizontal Weight:** 200 pounds
- **Vertical Weight:** 100 pounds
- **Offset of C.G. from table:** 1"
- **Eccentricity of C.G. from axis:** 1"

Rotation

- **Motor:** Variable speed DC 1/12HP
- **Rotational Torque:** 102 inch-pounds
- **Speed range:** 0.3 to 9.0 RPM

Tilt

- **Range:** 90° forward tilt
- **Actuation:** 4-1/2" hand wheel with self-lockin worm drive

Table

- **Size:** 12" diameter, ground, with four radial T-slots
- **Mounting bolt size:** 5/16"
- **Grounding:** 250 Amp mechanical ground

Controls

- **Control Panel:** Panel built-in to positioner frame
- **Speed Control:** One-turn potentiometer
- **Directional Control:** Two-position selector switch
- **Power:** 115V, 2Amp, Single-Phase, 60 Hz

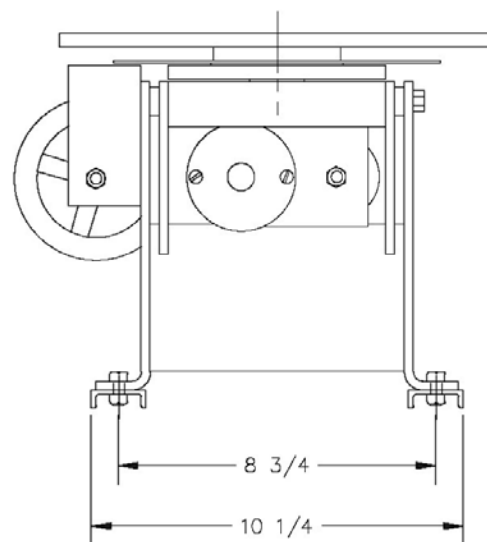
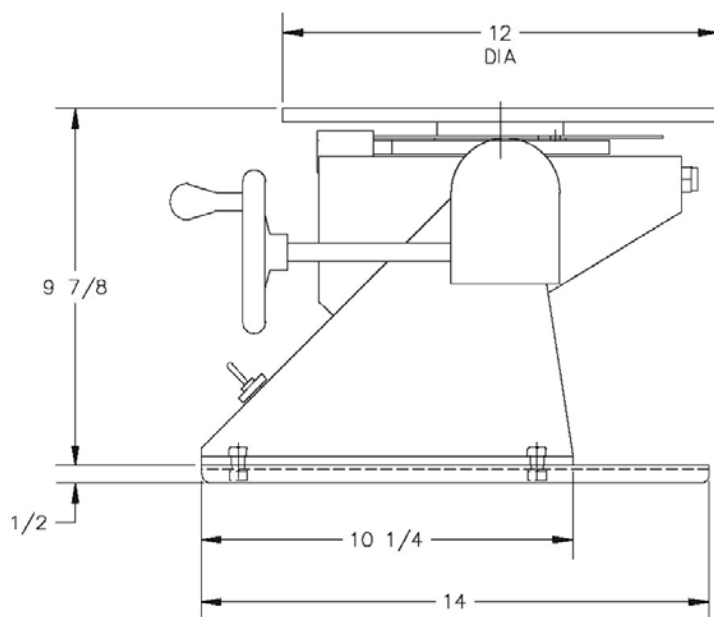
- **Overload Protection:** On/Off switch with fuse
- **Foot Switch:** Remote start/stop with 6 ft. cable

Options

- **Additional Table Speeds:** 0.2 - 4.5 and 0.6 - 18 RPM
- **Through Spindle Gas Purging**
- **Heavy-duty On-Off Foot Switch**
- **Foot Switch Guard**
- **Variable Speed Foot Switch**
- **Spin-loc Chucks**
- **3-Jaw Scroll Chucks**

Weight

- **Shipping weight:** 56 pounds



Drawings show optional leg kit



PA-2 MT, 2-Axis Welding Positioner

The PA-2 MT, 2-Axis Welding Positioner is ideal for construction, OEM, oil & gas, and contract manufacturing applications. It delivers precise, repeatable, and safe operation. Better positioning yields higher quality welds, improved productivity, and a lower risk of operator injury.

PRESTON-EASTIN MODEL PA-2 MT PRODUCT DATA

Capacity

- **Weight:** 250 pounds
- **Offset of C.G. from table:** 2.5"
- **Eccentricity of C.G. from axis:** 2"

Rotation

- **Motor:** Variable speed DC 1/8 HP
- **Rotational Torque:** 500 inch-pounds
- **Speed Range:** 0.3 to 7.9 RPM
- **Speed Accuracy:** 3% of base speed
- **Safety:** Drive reducer is self-locking

Weight

- **Shipping weight:** 125 pounds

Tilt

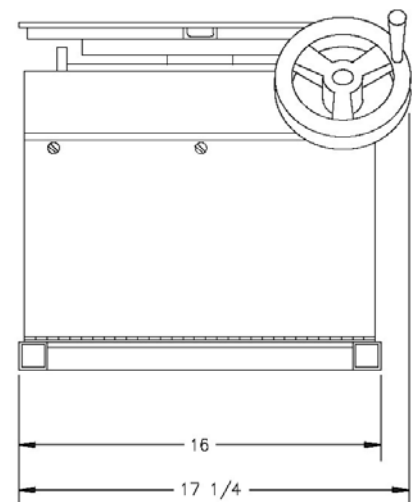
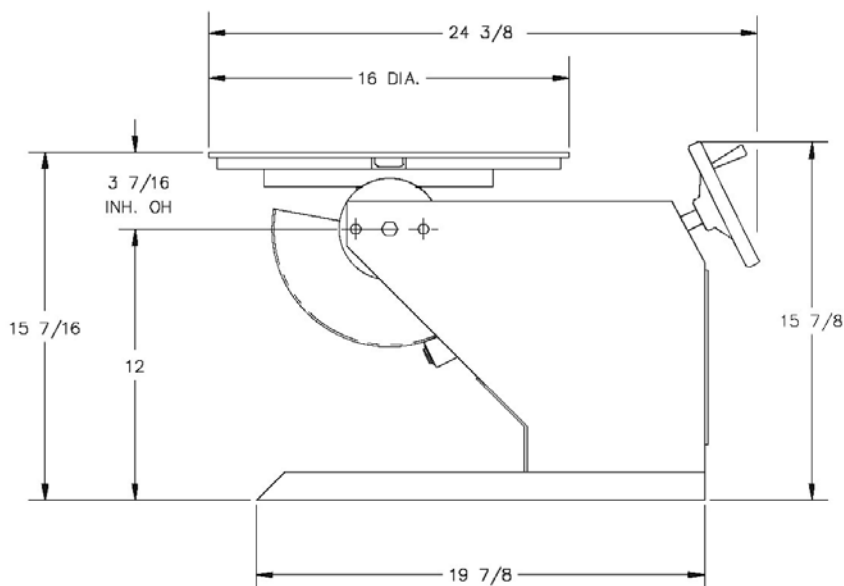
- **Range:** 135° forward tilt
- **Tilt Torque:** Manual
- **Actuation:** 6" hand wheel with self-locking worm drive

Table

- **Size:** 16" round with four radial T-slots
- **Mounting bolt size:** 3/8"
- **Bearings:** Timken tapered roller bearings
- **Grounding:** 600 Amp spring-loaded mechanical ground

Controls

- **Control Panel:** Panel built-in to positioner frame
- **Speed Control:** One-turn potentiometer
- **Directional Control:** Two-position selector switch
- **Power:** 115V, 2 Amp, Single-Phase, 60 Hz
- **Overload Protection:** Fuse
- **Foot Switch:** Remote start/stop with 6 ft. cable



PA-5 MT, 2-Axis Welding Positioner

The PA-5 MT, 2-Axis Welding Positioner is ideal for construction, OEM, oil & gas, and contract manufacturing applications. It delivers precise, repeatable, and safe operation. Better positioning yields higher quality welds, improved productivity, and a lower risk of operator injury.

PRESTON-EASTIN MODEL PA-5 MT PRODUCT DATA

Capacity

- **Weight:** 500 pounds
- **Offset of C.G. from table:** 4"
- **Eccentricity of C.G. from axis:** 4"

Rotation

- **Motor:** Variable speed DC 1/4 HP
- **Rotational Torque:** 2000 inch-pounds
- **Speed Range:** 0.2 to 3.7 RPM
- **Speed Accuracy:** 3% of base speed
- **Safety:** Drive reducer is self-locking

Weight

- **Shipping weight:** 365 pounds

Tilt

- **Range:** 135° forward tilt
- **Tilt Torque:** Manual
- **Actuation:** 8" hand wheel with self-locking worm drive

Table

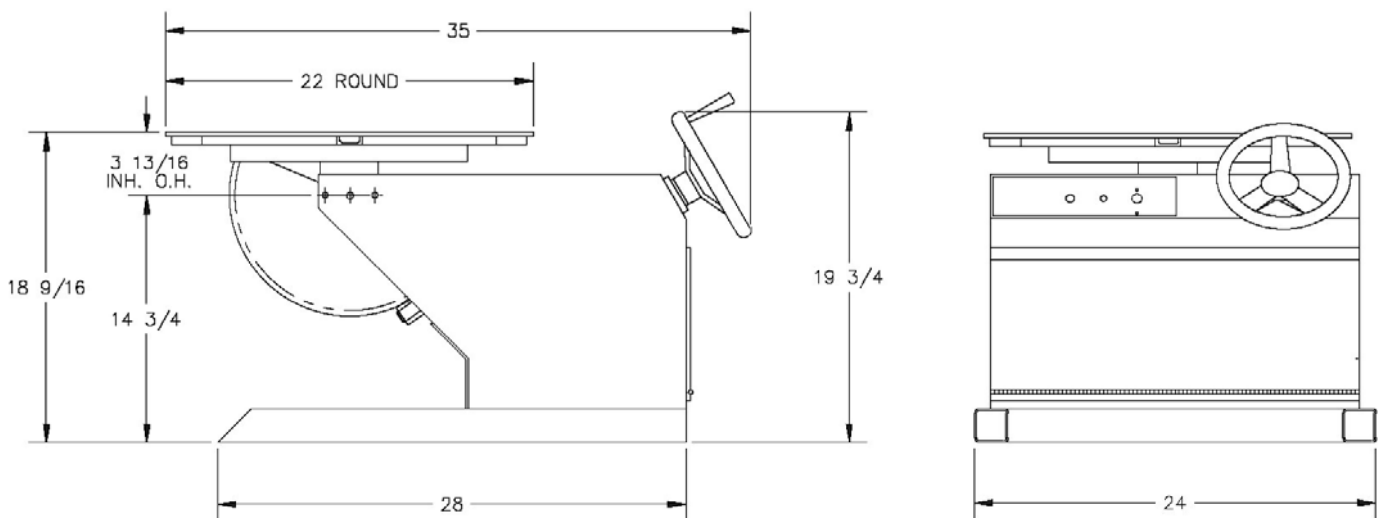
- **Size:** 22" round with four radial T-slots
- **Mounting bolt size:** 3/8"
- **Bearings:** Timken tapered roller bearings
- **Grounding:** 600 Amp spring-loaded mechanical ground

Controls

- **Control Panel:** Panel built-in to positioner frame
- **Speed Control:** One-turn potentiometer
- **Directional Control:** Two-position selector switch
- **Power:** 115V, 15 Amp, Single-Phase, 60 Hz
- **Overload Protection:** Circuit breaker
- **Foot Switch:** Remote start/stop with 6 ft. cable

Options

- **Power Tilt**



PE-15 HD4, 2-Axis Welding Positioner

The PE-15 HD4 2-Axis Welding Positioner is ideal for construction, OEM, oil & gas, and contract manufacturing applications. It delivers precise, repeatable, and safe operation. Better positioning yields higher quality welds, improved productivity, and lower risk of operator injury.

PRESTON-EASTIN MODEL PE-15 HD4 PRODUCT DATA

Capacity

- **Weight:** 1500 lbs
- **Offset of C.G. from Table:** 4"
- **Eccentricity of C.G. from axis:** 4"

Rotation

- **Motor:** Variable speed AC 1/2 HP
- **Speed range:** 0.36 to 3.6 RPM
- **Speed Accuracy:** 2% of set speed

Tilt

- **Motor:** AC motor ¼ HP
- **Speed:** 0.55 RPM
- **Range:** 0° – 135° forward tilt
- **Inherent Overhang:** 4.38"

Table

- **Size:** 24" diameter with four radial T-slots
- **Mounting bolt size:** 1/2"
- **Bearings:** Tapered roller bearings
- **Ground:** 400 Amp spring loaded mechanical ground

Elevation

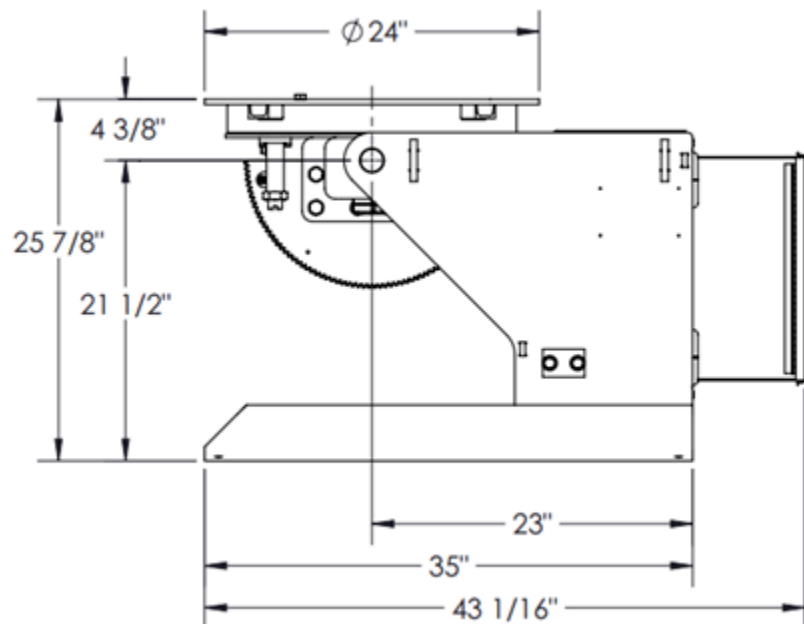
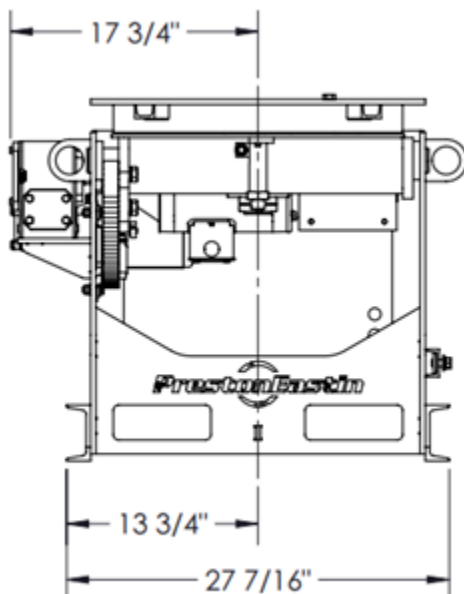
- **Adjustment:** None
- **Height:** 25-7/8" (table top)

Weight

- **Shipping weight:** 650 lbs

Controls

- **Rotation Speed:** One-turn potentiometer
- **Rotation Direction:** Three-position toggle switch, FWD/OFF/REV
- **Rotation Control:** ON/OFF footswitch w/ 30 ft cable
- **Tilt Control:** Three-position toggle switch, UP/OFF/DOWN
- **Power:** 115V, 15 Amp, Single Phase, 60 Hz
- **Overload Protection:** Circuit breaker
- **Additional Options:** Variable Speed Footswitch, FWD/REV Footswitch, and Hand Pendant (toggle switches pre-installed for options)



PE-30 HD6, 2-Axis Welding Positioner

The PE-30 HD6 2-Axis Welding Positioner is ideal for construction, OEM, oil & gas, and contract manufacturing applications. It delivers precise, repeatable, and safe operation. Better positioning yields higher quality welds, improved productivity, and a lower risk of operator injury. The PE-30 HD6 is extremely versatile as it operates on a 120V power source that is commonly provided by an ordinary wall outlet.

PRESTON-EASTIN MODEL PE-30 HD6 PRODUCT DATA

Capacity

- **Weight:** 3,000 pounds
- **Offset of C.G. from table:** 6"
- **Eccentricity of C.G. from axis:** 6"

Rotation

- **Motor:** Variable speed AC 1HP
- **Speed range:** 0.2 to 2.8 RPM
- **Speed accuracy:** 2% of set speed

Tilt

- **Motor:** AC brake motor 1 HP
- **Range:** 0° - 135° forward tilt

Table

- **Size:** 30" square with four radial T-slots
- **Mounting bolt size:** 1/2" - 13"
- **Bearings:** Tapered roller bearings

Elevation

- **Adjustment:** Manual
- **Range:** 32-3/4" to 44-3/4" in 4" increments (table top)

Controls

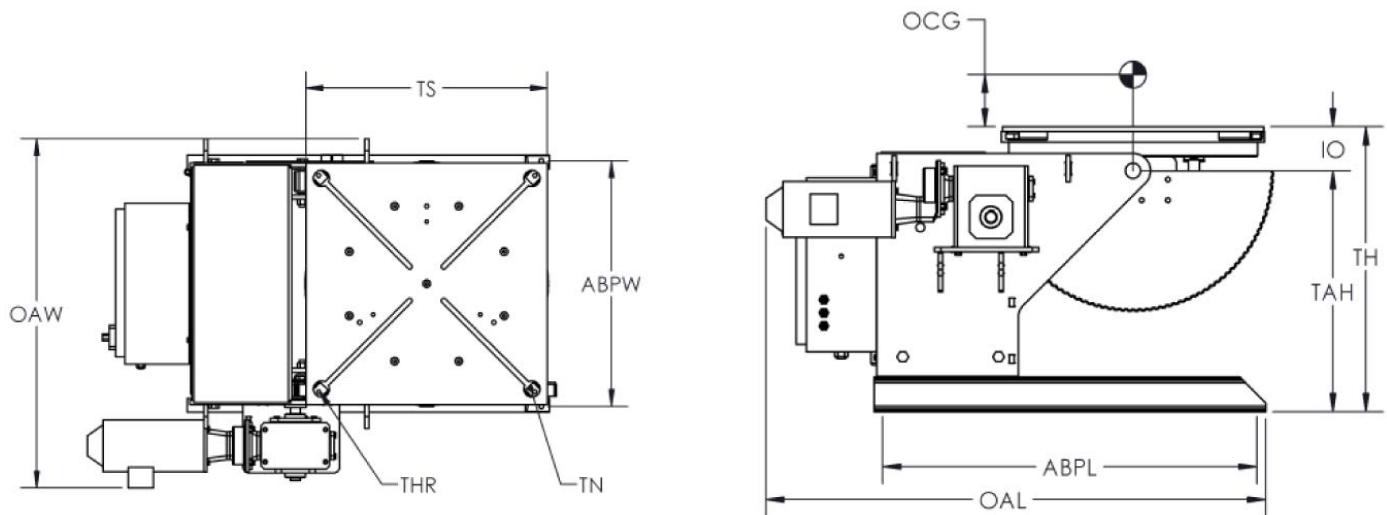
- **Pendant:** Remote pendant with 30 ft. cable

Electricals

- **Ground:** 600 Amp spring loaded mechanical ground
- **Power:** 120V Single Phase, 60 Hz, 230V/460V Optional
- **Table Drive:** Variable Frequency Drive (VFD)
- **Tilt Drive:** Variable Frequency Drive (VFD)
- **Overload Protection:** Circuit breaker
- **Foot Switch:** Optional

Weight

- **Shipping weight:** 1,800 pounds



| Symbol | Description | Dimensions | Symbol | Description | Dimensions |
|--------|--------------------------|------------|--------|----------------------------|------------|
| OAL | Overall Length | 57-1/2" | TS | Table Size | 30" |
| OAW | Overall Width | 43-1/2" | ABPL | Anchor Bolt Pattern Length | 43" |
| TH | Table Height | 32-3/4" | ABPW | Anchor Bolt Pattern Width | 30" |
| TAH | Tilt Axis Height | 27-3/4" | THR | T-Nut Thread | 1/2" |
| IO | Inherent Overhang | 5" | TN | T-Nut Quantity | 4" |
| OCG | Offset Center of Gravity | 6" | | | |



PE-45 HD12, 2-Axis Welding Positioner

The PE-45 HD12 2-Axis Welding Positioner is ideal for construction, OEM, oil & gas, and contract manufacturing applications. It delivers precise, repeatable, and safe operation. Better positioning yields higher quality welds, improved productivity, and a lower risk of operator injury.

PRESTON-EASTIN MODEL PE-45 HD12 PRODUCT DATA

Capacity

- **Weight:** 4,500 pounds
- **Offset of C.G. from table:** 12"
- **Eccentricity of C.G. from axis:** 12"

Rotation

- **Motor:** Variable speed AC 2HP
- **Speed range:** 0.7 to 1.45 RPM
- **Speed accuracy:** 2% of set speed

Tilt

- **Motor:** AC brake motor 2 HP
- **Range:** 0° - 135° forward tilt

Table

- **Size:** 42" square with four radial T-slots
- **Mounting bolt size:** 3/4"
- **Bearings:** Tapered roller bearings

Elevation

- **Adjustment:** Manual
- **Range:** 38-5/8" to 53-5/8" in 5" increments (table top)

Controls

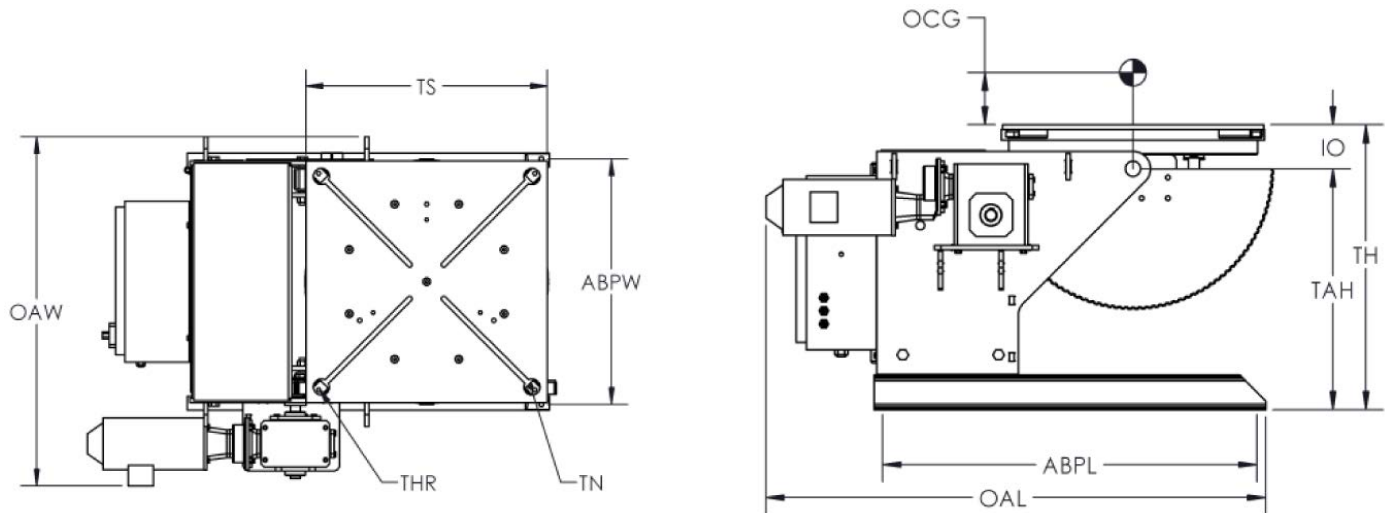
- **Pendant:** Remote pendant with 30 ft. cable

Electricals

- **Ground:** (2) each, 600 Amp spring loaded mechanical ground
- **Power:** 480V Three Phase, 60 Hz
- **Overload Protection:** Fused disconnect
- **Foot Switch:** Optional

Weight

- **Shipping weight:** 2,700 pounds



| Symbol | Description | Dimensions | Symbol | Description | Dimensions |
|--------|--------------------------|------------|--------|----------------------------|------------|
| OAL | Overall Length | 68-7/16" | TS | Table Size | 42" |
| OAW | Overall Width | 51-9/16" | ABPL | Anchor Bolt Pattern Length | 64" |
| TH | Table Height | 38-5/8" | ABPW | Anchor Bolt Pattern Width | 35-1/16" |
| TAH | Tilt Axis Height | 32-1/2" | THR | T-Nut Thread | 3/4"-10" |
| IO | Inherent Overhang | 6-1/8" | TN | T-Nut Quantity | 4" |
| OCG | Offset Center of Gravity | 12" | | | |



PE-60 HD12, 2-Axis Welding Positioner

The PE-60 HD12 2-Axis Welding Positioner is ideal for construction, OEM, oil & gas, and contract manufacturing applications. It delivers precise, repeatable, and safe operation. Better positioning yields higher quality welds, improved productivity, and a lower risk of operator injury.

PRESTON-EASTIN MODEL PE-60 HD12 PRODUCT DATA

Capacity

- **Weight:** 6,000 pounds
- **Offset of C.G. from table:** 12"
- **Eccentricity of C.G. from axis:** 12"

Rotation

- **Motor:** Variable speed AC 2HP
- **Speed range:** 0.4 to 1.18 RPM
- **Speed accuracy:** 2% of set speed

Tilt

- **Motor:** AC brake motor 2 HP
- **Range:** 0° - 135° forward tilt

Table

- **Size:** 42" square with four radial T-slots
- **Mounting bolt size:** 3/4"
- **Bearings:** Tapered roller bearings

Elevation

- **Adjustment:** Manual
- **Range:** 37-1/8" to 57-1/8" in 5" increments (table top)

Controls

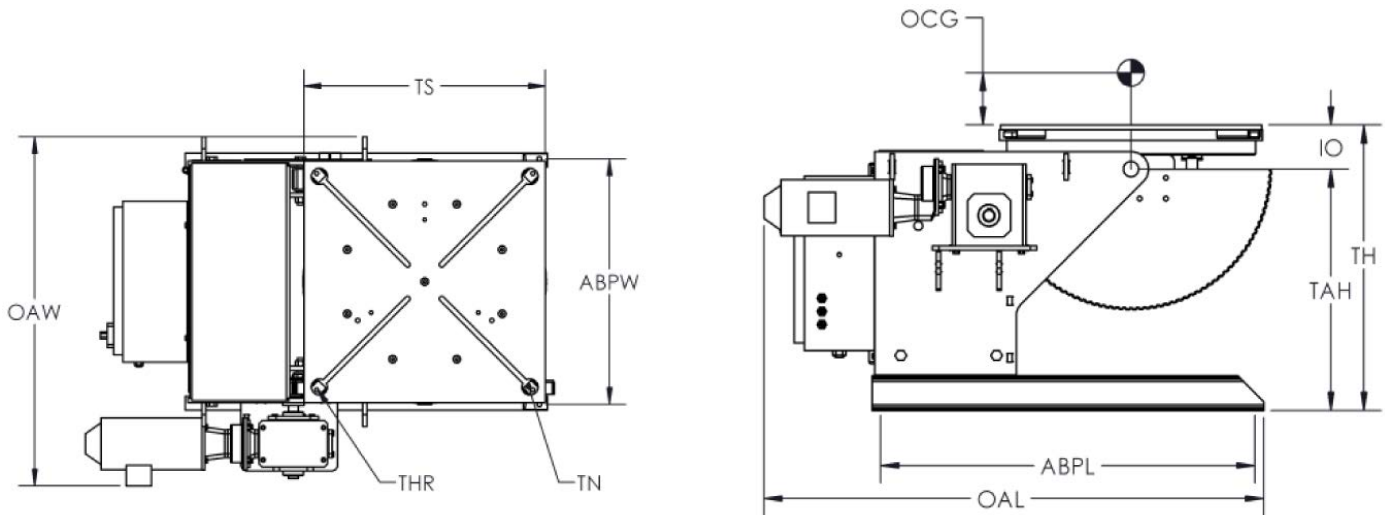
- **Pendant:** Remote pendant with 30 ft. cable

Electricals

- **Ground:** (2) each, 600 Amp spring loaded mechanical ground
- **Power:** 480V Three Phase, 60 Hz
- **Table Drive:** Variable Frequency Drive (VFD)
- **Tilt Drive:** Variable Frequency Drive (VFD)
- **Overload Protection:** Circuit breaker
- **Foot Switch:** Optional

Weight

- **Shipping weight:** 3,400 pounds



| Symbol | Description | Dimensions | Symbol | Description | Dimensions |
|--------|--------------------------|------------|--------|----------------------------|------------|
| OAL | Overall Length | 86-1/8" | TS | Table Size | 42" |
| OAW | Overall Width | 48-3/4" | ABPL | Anchor Bolt Pattern Length | 64" |
| TH | Table Height | 37-1/8" | ABPW | Anchor Bolt Pattern Width | 44-3/4" |
| TAH | Tilt Axis Height | 30-1/8" | THR | T-Nut Thread | 3/4"-10" |
| IO | Inherent Overhang | 7" | TN | T-Nut Quantity | 4" |
| OCG | Offset Center of Gravity | 12" | | | |



PA-100 HD12, 2-Axis Welding Positioner

The PA-100 HD12 2-Axis Welding Positioner is ideal for construction, OEM, oil & gas, and contract manufacturing applications. It delivers precise, repeatable, and safe operation. Better positioning yields higher quality welds, improved productivity, and a lower risk of operator injury.

PRESTON-EASTIN MODEL PA-100 HD12 PRODUCT DATA

Capacity

- **Weight:** 10,000 pounds
- **Offset of C.G. from table:** 12"
- **Eccentricity of C.G. from axis:** 12"

Rotation

- **Motor:** Variable speed AC 3HP
- **Speed range:** 0.03 to 0.86 RPM
- **Speed accuracy:** 2% of set speed

Tilt

- **Motor:** AC brake motor 3 HP
- **Range:** 0° - 135° forward tilt

Table

- **Size:** 54" square with four radial T-slots
- **Mounting bolt size:** 3/4" - 10"
- **Bearings:** Tapered roller bearings

Elevation

- **Adjustment:** Manual
- **Range:** 49" to 73" in 6" increments (table top)

Controls

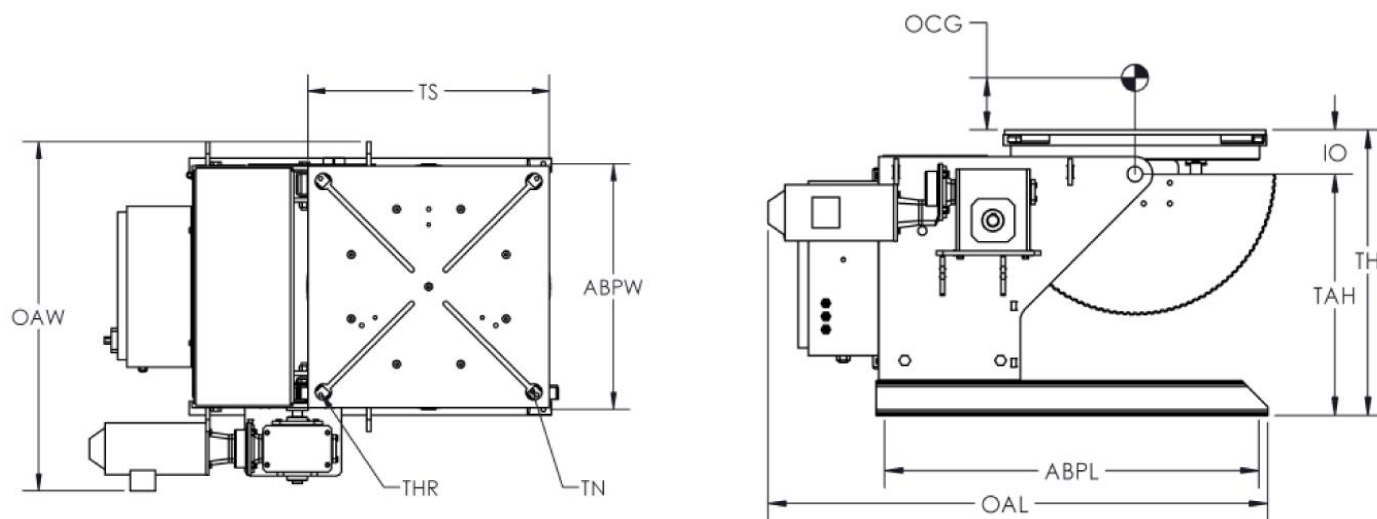
- **Pendant:** Remote pendant with 30 ft. cable

Electricals

- **Ground:** (2) each, 600 Amp spring loaded mechanical ground
- **Power:** 480V Three Phase, 60 Hz
- **Table Drive:** Variable Frequency Drive (VFD)
- **Tilt Drive:** Variable Frequency Drive (VFD)
- **Overload Protection:** Circuit breaker
- **Foot Switch:** Optional

Weight

- **Shipping weight:** 6,250 pounds



| Symbol | Description | Dimensions | Symbol | Description | Dimensions |
|--------|--------------------------|------------|--------|----------------------------|------------|
| OAL | Overall Length | 106-5/16" | TS | Table Size | 54" |
| OAW | Overall Width | 60-3/4" | ABPL | Anchor Bolt Pattern Length | 82" |
| TH | Table Height | 49-1/8" | ABPW | Anchor Bolt Pattern Width | 56-3/4" |
| TAH | Tilt Axis Height | 40-1/8" | THR | T-Nut Thread | 3/4"-10" |
| IO | Inherent Overhang | 9" | TN | T-Nut Quantity | 4" |
| OCG | Offset Center of Gravity | 12" | | | |



PE-160 HD12, 2-Axis Welding Positioner

The PE-160 HD12 2-Axis Welding Positioner is ideal for construction, OEM, oil & gas, and contract manufacturing applications. It delivers precise, repeatable, and safe operation. Better positioning yields higher quality welds, improved productivity, and a lower risk of operator injury.

PRESTON-EASTIN MODEL PE-160 HD12 PRODUCT DATA

Capacity

- **Weight:** 16,000 pounds
- **Offset of C.G. from table:** 12"
- **Eccentricity of C.G. from axis:** 12"

Rotation

- **Motor:** Variable speed AC 5HP
- **Speed range:** 0.3 to 0.68 RPM
- **Speed accuracy:** 2% of set speed

Tilt

- **Motor:** AC brake motor 5 HP
- **Range:** 0° - 135° forward tilt

Table

- **Size:** 60" square with four radial T-slots
- **Mounting bolt size:** 3/4" - 10"
- **Bearings:** Tapered roller bearings

Elevation

- **Adjustment:** Manual
- **Range:** 49" to 73" in 6" increments (table top)

Controls

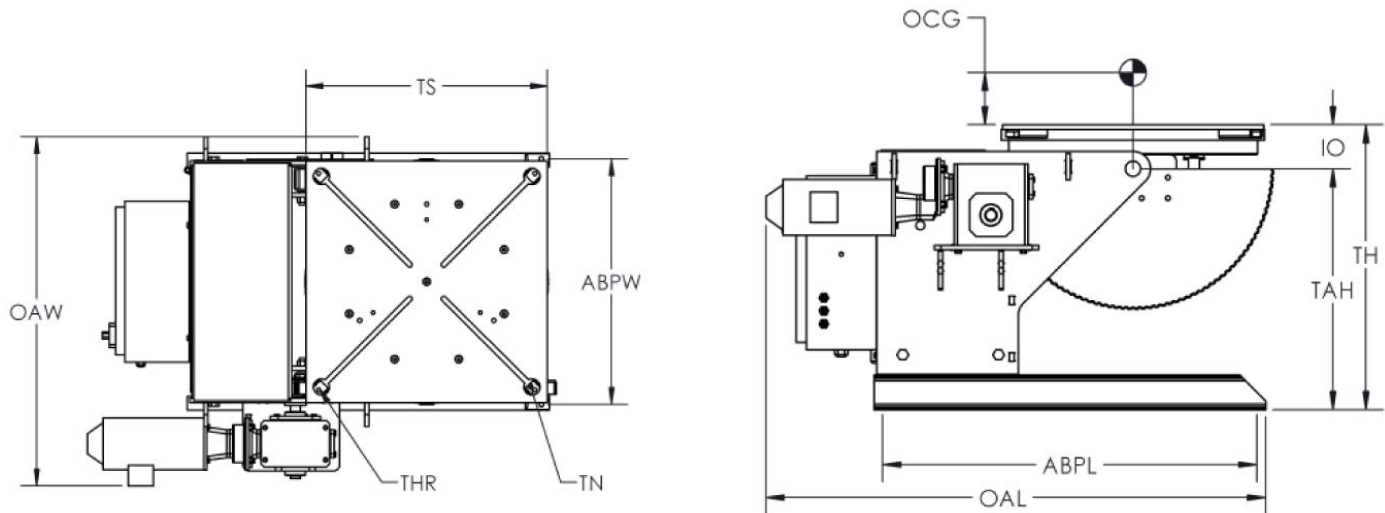
- **Pendant:** Remote pendant with 30 ft. cable

Electricals

- **Ground:** (2) each, 600 Amp spring loaded mechanical ground
- **Power:** 480V Three Phase, 60 Hz
- **Table Drive:** Variable Frequency Drive (VFD)
- **Tilt Drive:** Variable Frequency Drive (VFD)
- **Overload Protection:** Circuit breaker
- **Foot Switch:** Optional

Weight

- **Shipping weight:** 12,400 pounds



| Symbol | Description | Dimensions | Symbol | Description | Dimensions |
|--------|--------------------------|------------|--------|----------------------------|------------|
| OAL | Overall Length | 109-5/16" | TS | Table Size | 60" |
| OAW | Overall Width | 66-3/4" | ABPL | Anchor Bolt Pattern Length | 82" |
| TH | Table Height | 49-7/8" | ABPW | Anchor Bolt Pattern Width | 62-3/4" |
| TAH | Tilt Axis Height | 40-1/8" | THR | T-Nut Thread | 3/4"-10" |
| IO | Inherent Overhang | 9-3/4" | TN | T-Nut Quantity | 4" |
| OCG | Offset Center of Gravity | 12" | | | |



PA-240 HD12, 2-Axis Welding Positioner

The PA-240 HD12 2-Axis Welding Positioner is ideal for construction, OEM, oil & gas, and contract manufacturing applications. It delivers precise, repeatable, and safe operation. Better positioning yields higher quality welds, improved productivity, and a lower risk of operator injury.

PRESTON-EASTIN MODEL PA-240 HD12 PRODUCT DATA

Capacity

- **Weight:** 24,000 pounds
- **Offset of C.G. from table:** 12"
- **Eccentricity of C.G. from axis:** 12"

Rotation

- **Motor:** Variable speed DC 5HP
- **Speed range:** 0.02 to 0.59 RPM
- **Speed accuracy:** 2% of set speed

Tilt

- **Motor:** AC brake motor 7.5 HP
- **Range:** 0° - 135° forward tilt

Table

- **Size:** 66" square with four radial T-slots
- **Mounting bolt size:** 3/4" - 10"
- **Bearings:** Tapered roller bearings

Elevation

- **Adjustment:** Manual
- **Range:** 60-1/4" to 84-1/4" in 6" increments (table top)

Controls

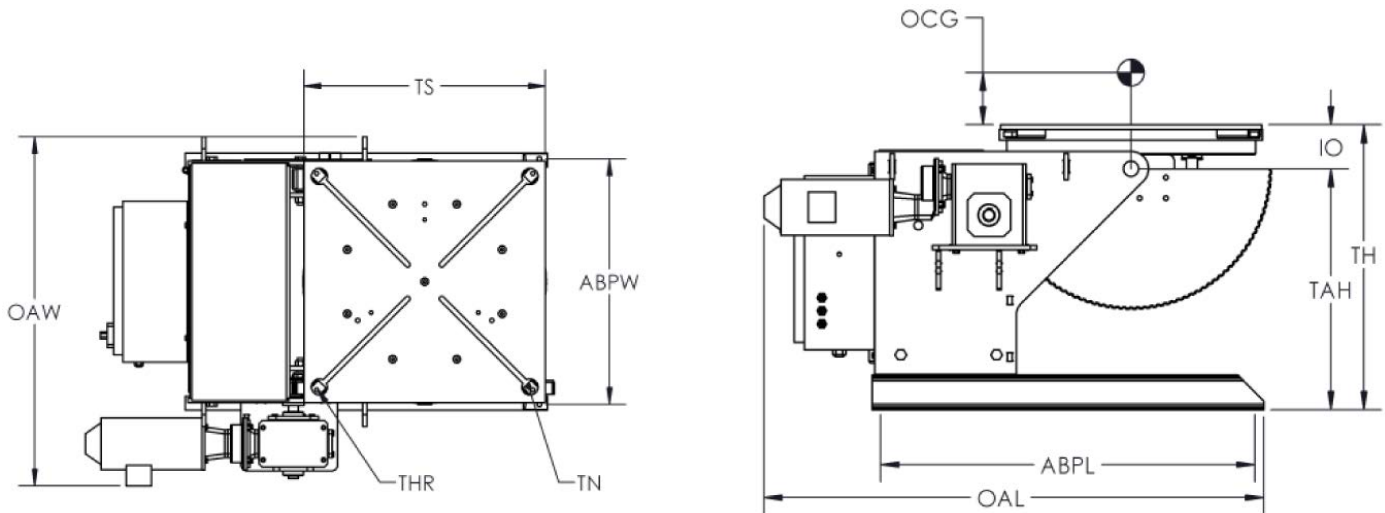
- **Pendant:** Remote pendant with 30 ft. cable

Electricals

- **Ground:** (2) each, 600 Amp spring loaded mechanical ground
- **Power:** 480V Three Phase, 60 Hz
- **Table Drive:** Variable Frequency Drive (VFD)
- **Tilt Drive:** Variable Frequency Drive (VFD)
- **Overload Protection:** Circuit breaker
- **Foot Switch:** Optional

Weight

- **Shipping weight:** 12,500 pounds



| Symbol | Description | Dimensions | Symbol | Description | Dimensions |
|--------|--------------------------|------------|--------|----------------------------|------------|
| OAL | Overall Length | 109-5/16" | TS | Table Size | 66" |
| OAW | Overall Width | 73-3/4" | ABPL | Anchor Bolt Pattern Length | 91" |
| TH | Table Height | 60-1/4" | ABPW | Anchor Bolt Pattern Width | 64-3/4" |
| TAH | Tilt Axis Height | 51" | THR | T-Nut Thread | 3/4"-10" |
| IO | Inherent Overhang | 9-1/4" | TN | T-Nut Quantity | 4" |
| OCG | Offset Center of Gravity | 12" | | | |



Options

Foot Switches, Wireless Foot Switches, Wireless Pendants (1 or 2 Axis), Dial-A-Matic

WIRELESS PENDANT



- WP100A (1 Axis)
- WP100B (2 Axis)

FOOT SWITCHES

Preston-Eastin offers several optional foot switches for equipment control.



VFS-20

SFS-20

RFS-20

VFS-20 Variable Speed Foot Switch
SFS-20 On/Off Foot Switch
RFS-20 Forward/Reverse Foot Switch

CHUCKS

Spin-Lock

- PSL-7-2
- PSL-7-3
- PSL-12-3

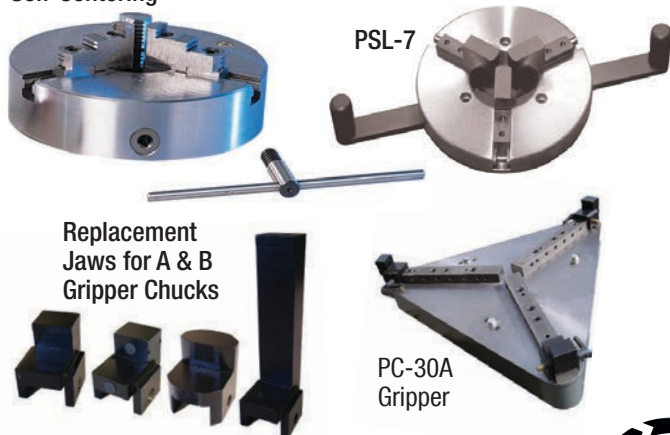
PC-15
Self-Centering

Gripper

- PC-20A
- PC-30A
- PC-42B
- PC-48C
- PC-60C

Self-Centering

- PC-8
- PC-12
- PC-15
- PC-24



PSL-7

PC-30A
Gripper

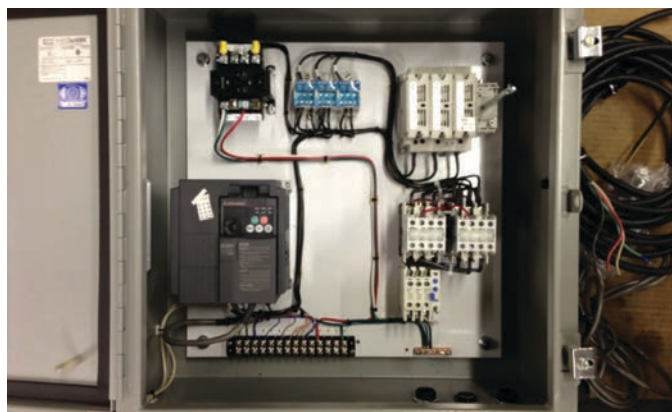
Replacement
Jaws for A & B
Gripper Chucks



**Square and Round Tables
Available on All Models**

Electrical Controls

Electrical Panel



- Regulate Speed
- Smoother Performance
- Feedback for Troubleshooting

**Single Phase and 3 Phase
Available on Select Models**

Non-Conductive Pendant Standard





Positioning Solutions since 1972

PrestonEastin designs and manufactures a complete line of manual, powered, and robotic positioning systems and equipment. Since its inception in 1972, **PrestonEastin** has provided innovative solutions to positioning requirements serving the welding, aerospace, aviation, automotive, transportation, ship building, material handling, thermal spray, and heavy equipment manufacturing industries.

At our new engineering and manufacturing facility in Tulsa, Oklahoma, we design and manufacture positioning solutions for precision operations, while continually upholding foundational principles of safety and reliability. We manufacture our products to afford our customers many years of safe and dependable operation.

We understand our customers' needs, and quickly respond with proven solutions to meet positioning requirements. Dedicated to continuous improvement of our products and services to ensure long term continued customer satisfaction worldwide.

Quality Policy

PrestonEastin is committed to meet the expectations and requirements of our customers, suppliers, co-workers, and all interested parties as well as continuously improve.



Certificate No. 8000



PE2AXIS-001; 8.31.18

PrestonEastin

9490 North Ridgeway Street
Tulsa, OK 74131

sales@prestoneastin.com
prestoneastin.com

(918) 834-5591
Fax (918) 834-5595