

GRIPPERS AND CHUCKS

Preston-Eastin Grippers and Chucks

Preston-Eastin offers a wide range of machine tool, spin lock, and gripper chucks. Our high-quality, cost-effective welding grippers and chucks are available to suit most any need or application.

When a chuck is purchased at the same time as the positioner or headstock, the chuck will be mounted and centered on the table.

Made in USA



(918) 834-5591

PRESTON-EASTIN

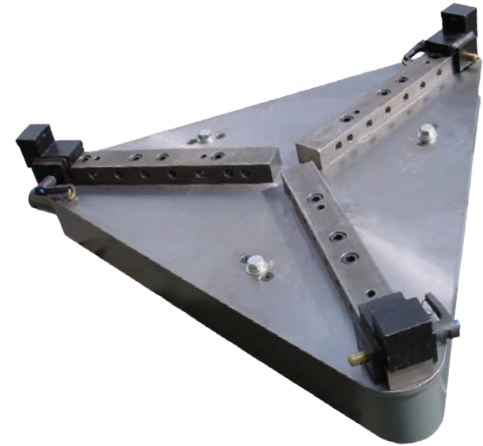
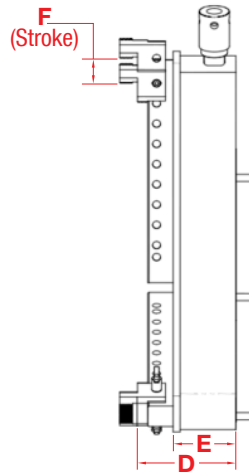
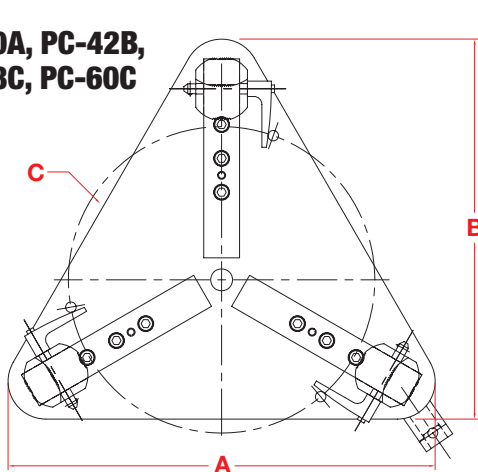
sales@prestoneastin.com
www.prestoneastin.com

Preston-Eastin Grippers and Chucks

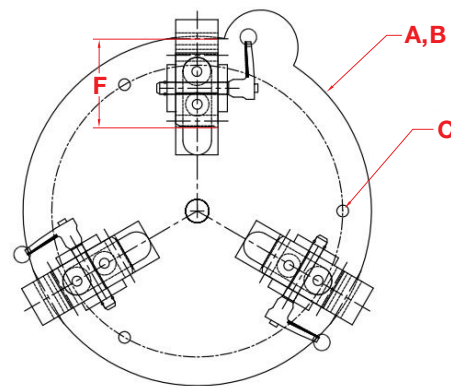
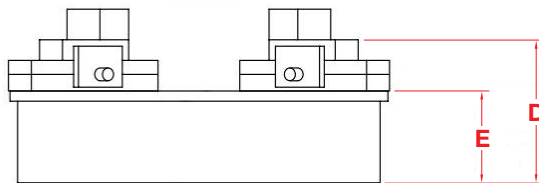
Gripper Chucks Dimensions

The jaws are moved to different locations by removing the Ball-Lock Pin, moving the jaw to the desired location, and installing the Ball-Lock Pin. Final gripping is accomplished by turning the handle at the outside of the base.

**PC-30A, PC-42B,
PC-48C, PC-60C**



PC-20A



Gripper Chucks

Model	Clamping Range ID	Clamping Range OD	Capacity LBS	Allowable Overhang at Max Weight	DIM "A"	DIM "B"	DIM "C"	DIM "D"	DIM "E"	DIM "F"	Weight LBS
PC-20A	6"-20"	1"-16-1/2"	1,000	5"	18-1/2"	18-1/2"	15-3/8"	7"	4-1/2"	2-1/4"	140
PC-30A	6-1/2"-32-1/4"	1-1/2 - 28-3/4	3,000	5"	26-27/32"	23-7/8"	19-1/4"	6-1/8"	4-5/8"	2-1/4"	250
PC-42B	9-7/8"-44-3/8"	1-1/2 - 42-1/8	3,000	5"	36-3/16"	32"	19-1/4"	6-3/16"	4-11/16"	2-1/4"	350
PC-48C	7"-52"	3"-48"	7,500	5"	45-5/16"	39-15/16"	28-7/8"	9-11/16"	6-3/16"	2-5/8"	720
PC-60C	7"-68"	3"-60"	7,500	5"	58-7/8"	50-7/8"	28-7/8"	9-11/16"	6-31/16"	2-5/8"	770



*Optional Jaws for A, B, C Gripper Chucks.
From left to right – Standard, Carbide
Insert, Serrated and Extended Uppercut.*

(918) 834-5591

PRESTON-EASTIN

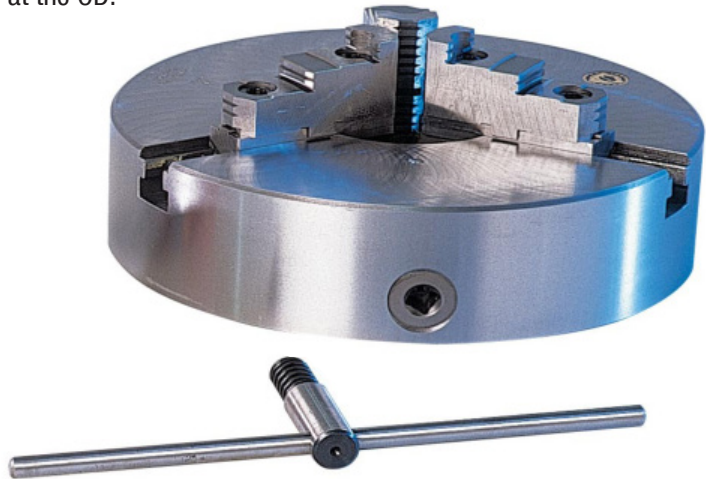
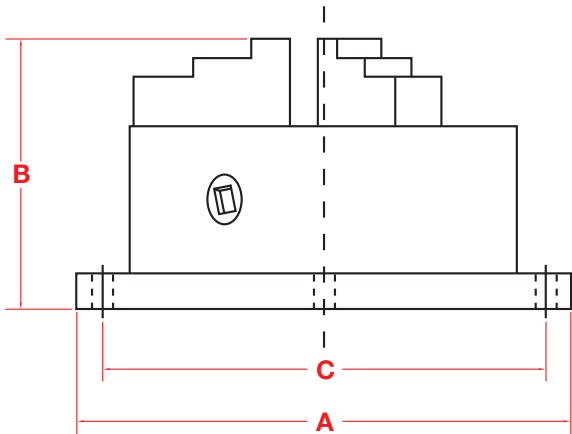
sales@prestoneastin.com
www.prestoneastin.com

Preston-Eastin Grippers and Chucks

Self-Centering & Spin-Lock Chucks Dimensions

Self-Centering Chucks:

These chucks are similar to lathe chucks. Using a manual "T" handle, the jaws will move in or out. Jaws move the full range from the smallest diameter, to complete removal at the OD.



Self-Centering Chucks

Model	Description	Clamping Range ID	Clamping Range OD	DIM "A"	DIM "B"	DIM "C"	Weight LBS
PC-8	Self-Centering Chuck	2-1/4"-7-3/4"	1/2"-7-7/8"	10"	5-7/16"	9"	46
PC-12	Self-Centering Chuck	3-1/8"-11-3/4"	1/2"-12-1/4"	16"	6-3/4"	14-1/2"	98
PC-15	Self-Centering Chuck	4-11/16"-14-7/8"	4-3/4"-14-7/8"	20"	7-17/32"	18-1/2"	292
PC-20	Self-Centering Chuck	5-7/8"-19-5/8"	5-7/8"-19-5/8"	24-1/4"	8"	22-3/4"	485
PC-24	Self-Centering Chuck	4-3/4"-18-5/8"	7/8"-24-3/4"	28-1/25"	9-3/32"	27"	567

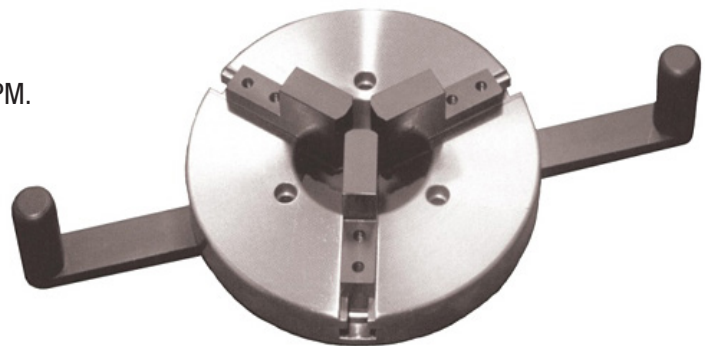
Spin-Locking Chucks:

These chucks also use a scroll for jaw movement but the scroll is rotated by two handles, 180 degrees apart that are rotated to move the jaws.

- 2 jaw and 3 jaw self-centering chuck with reverse jaws for OD/ID work.
- Chuck is lever actuated - no chuck key means no wasted movement, faster cycle time plus higher productivity.
- Replaceable jaws made of SAE 1018 steel can be welded or machined to suit your clamping needs.
- Low profile design plus low weight maximizes work capacity of positioner.
- Chuck can be bolted to any positioner or work surface.
- All steel construction, made in the U.S.A.
- **WARNING!** Do Not Use in Applications Faster Than 50 RPM.

Spin-Lock Chucks

Model	Description	Clamping Range OD
SL-7-2	2-Jaw Spin-Lock	0 - 7"
SL-7-3	3-Jaw Spin-Lock	3/8" - 7"
PSL-12-3	3-Jaw Spin-Lock	1" - 12"



(918) 834-5591

PRESTON-EASTIN

sales@prestoneastin.com
www.prestoneastin.com