

## Product Data – Variable Speed Carriages Preston-Eastin Model VSC 500-6M

### Capacity

- Weight: 500 pounds
- Offset from carriage face: 6 inches

### Construction

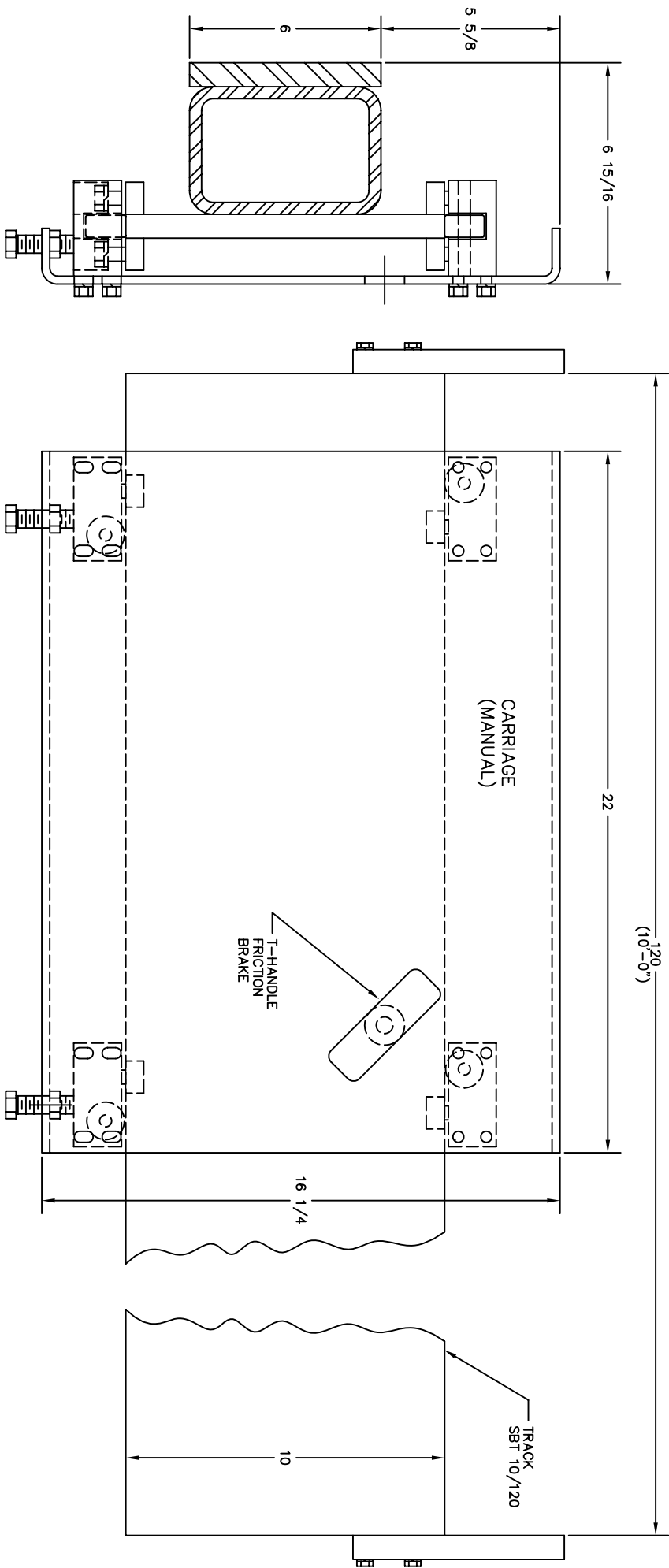
- Carriage: precision machined steel

### Drive

- Carriage drive: manually operated

### Options

- Carriage track module, 10 feet overall length, 8'2" of travel
- Additional travel length



PART NO. 00441

<p>PRESTON-EASTON INC.</p> <p>TULSA OKLAHOMA</p>		<p>DIMENSIONAL OUTLINE</p> <p>FILE VSC-500 (MANUAL) W/10'-0" TRACK</p> <p>DATE 9-10-81</p> <p>DESIGNER B.J.K.</p> <p>DATE 7-23-88</p>	
<p>DESIGNED BY</p> <p>B. COOK</p>	<p>DATE</p> <p>9-10-81</p>	<p>PART NO.</p> <p>00441</p>	<p>SCALE</p> <p>1 OF 1</p>

THIS DRAWING AND THE DESIGNS HEREIN ARE THE PROPERTY OF PRESTON-EASTON INC. REPRODUCTION AND/OR USE WITHOUT WRITTEN PERMISSION IS PROHIBITED.