

Product Data – Turning Rolls**Preston-Eastin Model TDRA-90 HD, TIRA-90 HD****Capacity**

- Weight: 90,000 pounds driver, 90,000 pounds idler
- Turning: 270,000 pounds
- Tractive: 16,200 pounds
- Work piece diameter: 8 inches to 15 feet

Frame

- Material: Welded steel channel
- Precision: Jig-drilled roller mounting holes
- Adjustability: Six center distance settings
- Features: Adjustable roller base position
- Constant centerline option: Available

Drive

- Wheel speed: 1.3 to 38 inches per minute
- Motor: 3 HP inverter duty AC
- Motor control: Variable frequency drive

Drive train:

- Gearboxes: Welded steel, worm drive
- Worm: Hardened steel
- Worm gear: 90,000 psi aluminum bronze
- Pillow blocks: Welded steel, tapered roller bearings
- Drive shaft: Tubular steel

Wheels

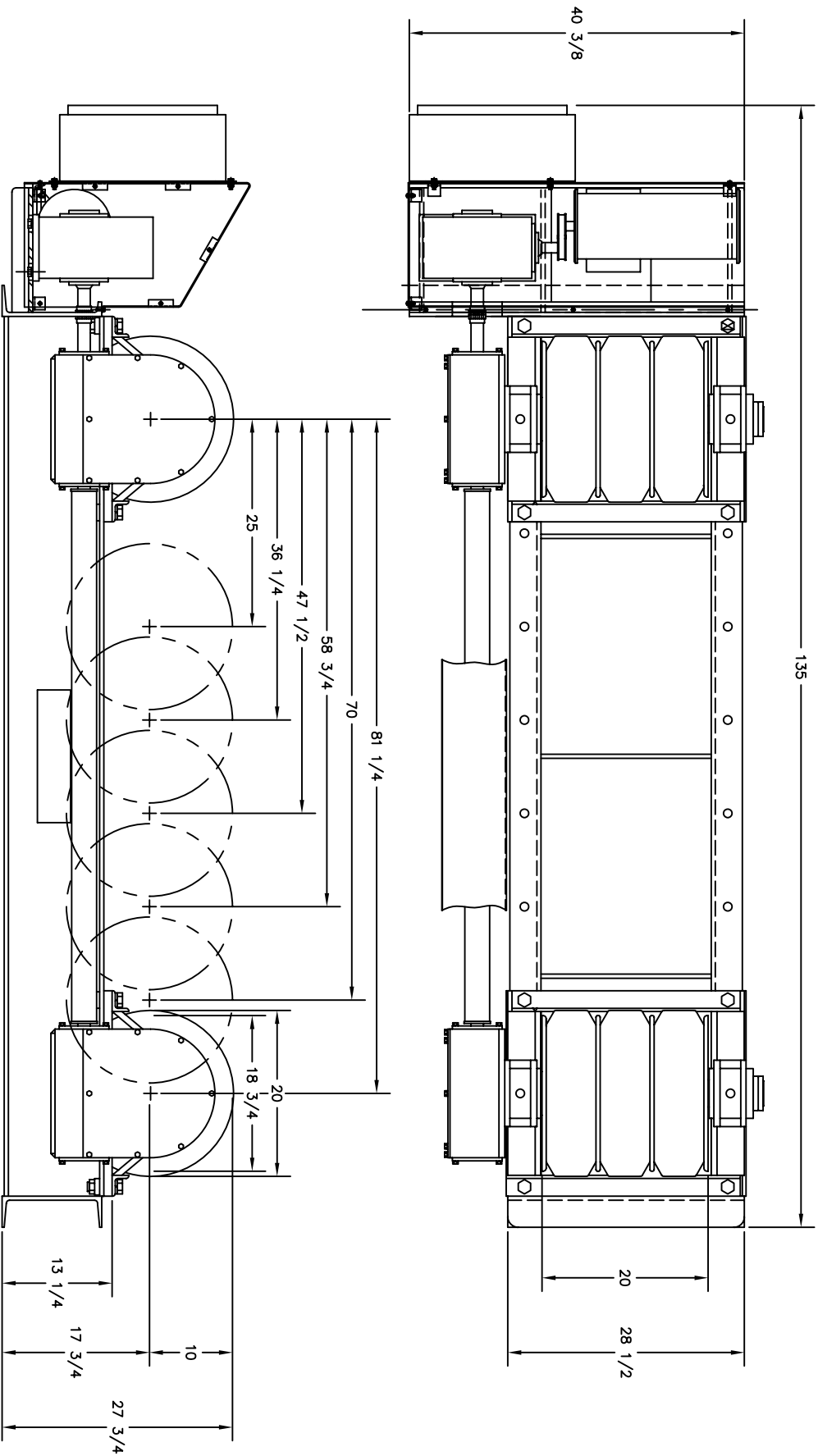
- Tires: 3/axle, 20" X 6" solid rubber, 85 durometer min.
- Backup discs: 4 steel discs per axle
- Optional wheels: Steel, urethane or phenolic

Control

- Pendant: Remote pendant with 30-foot cable
- Optional cable lengths: Available
- Speed control: One-turn potentiometer
- Directional control: Three position selector switch
- Rapid traverse: Two position selector switch
- Power: 240 OR 480V, three phase, 60 hz

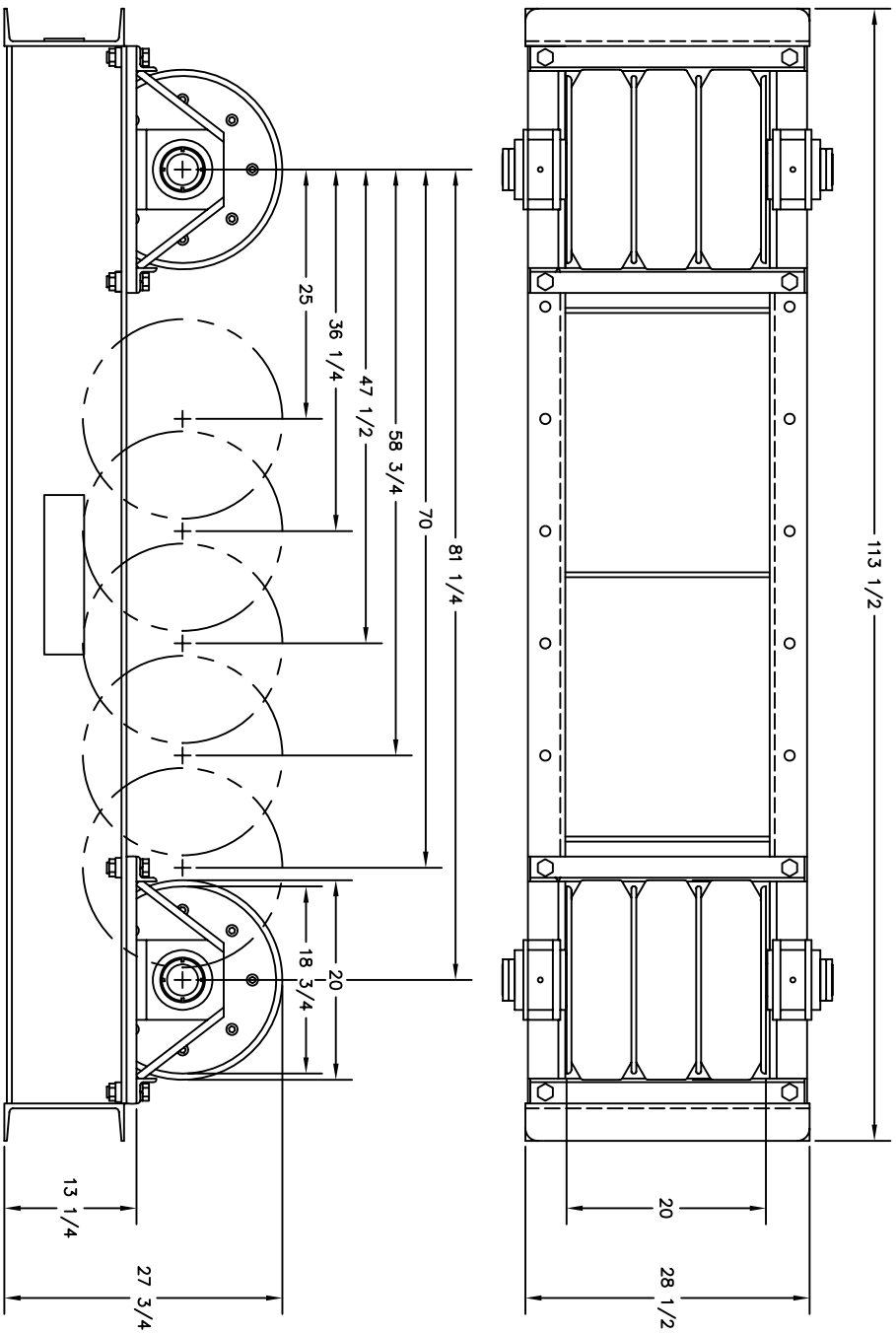
Weight

- Driver: 3900 pounds
- Idler: 2900 pounds



DIMENSIONAL OUTLINE	
MODEL	TDR-90
DATE	30413
DESIGNER	B. COOK
DATE	6-02-89
DESIGNER	B.L.K.
DATE	10-18-97
DESIGNER	
DATE	
SCALE	1/8" = 1'-0"

PRESTON-EASTIN INC.
 OKLAHOMA
 THIS DRAWING AND THE DESIGNS HEREIN ARE THE PROPERTY OF PRESTON-EASTIN INC.
 REPRODUCTION AND/OR USE WITHOUT WRITTEN PERMISSION IS PROHIBITED.



<p>PRESTON-EASTON INC.</p> <p>TULSA OKLAHOMA</p>		<p>DIMENSIONAL OUTLINE</p> <p>TIRA-90</p>	
<p>DATE: 8-16-78</p> <p>BY: B.J.K.</p>	<p>REV. NO. 1</p> <p>REV. DATE 10-13-97</p>	<p>30131</p>	<p>1 OF 1</p>

THIS DRAWING AND THE DESIGNS HEREIN ARE THE PROPERTY OF PRESTON-EASTON INC. REPRODUCTION AND/OR USE WITHOUT WRITTEN PERMISSION IS PROHIBITED.