

**Product Data – Turning Rolls****Preston-Eastin Model TDRA-5 HD, TIRA-5 HD****Capacity**

- Weight: 5,000 pounds driver, 5,000 pounds idler
- Turning: 15,000 pounds
- Tractive: 2100 pounds
- Work piece diameter: 6 inches to 12 feet

**Frame**

- Material: Welded steel channel
- Precision: Jig-drilled roller mounting holes
- Adjustability: Four center distance settings
- Features: Adjustable roller base position
- Constant centerline option: Available

**Drive**

- Wheel speed: 1.5 to 45 inches per minute
- Motor: 1/2 HP variable speed DC
- Motor control: Solid-state with dynamic braking

**Drive train:**

- Gearboxes: Welded steel, worm drive
- Worm: Hardened steel
- Worm gear: 90,000 psi aluminum bronze
- Pillow blocks: Welded steel, tapered roller bearings
- Drive shaft: Tubular steel

**Wheels**

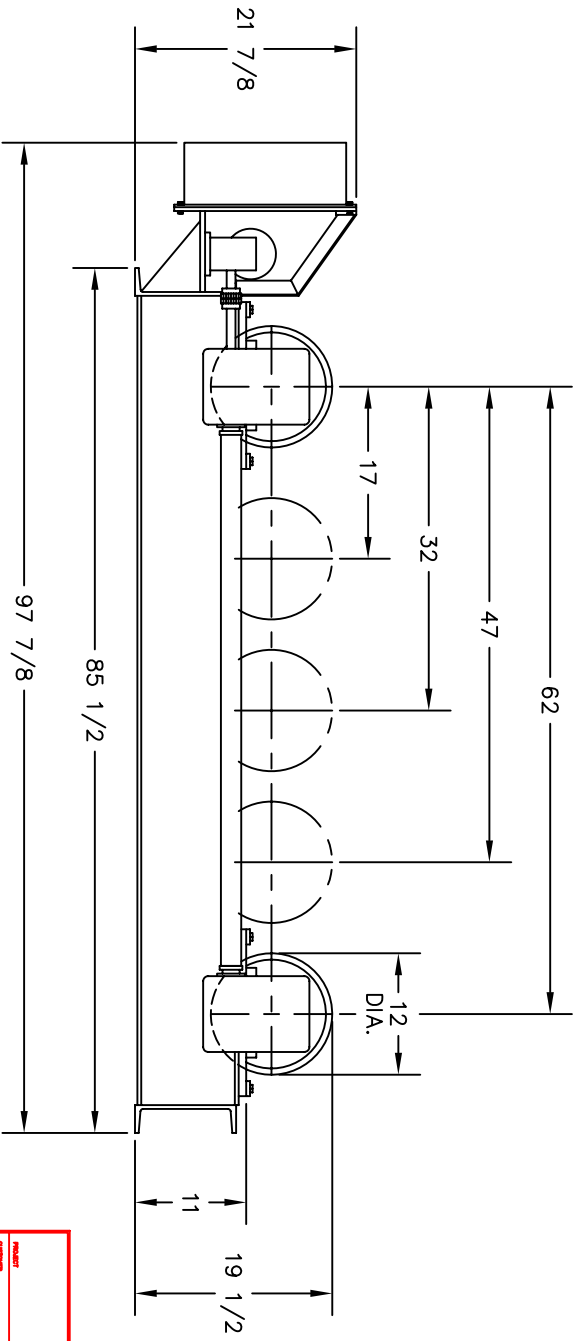
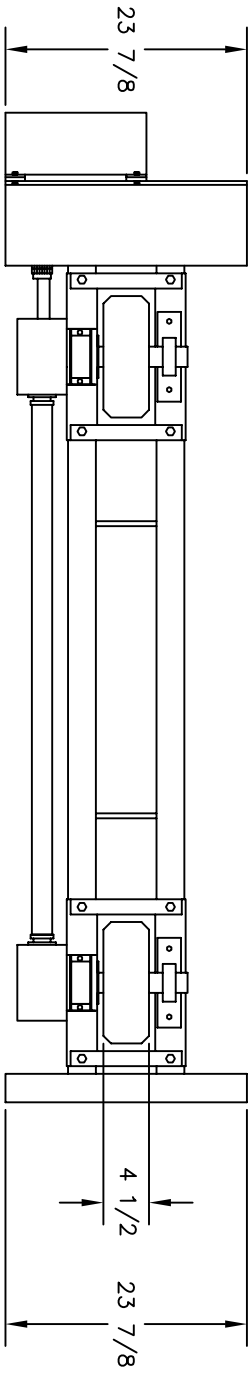
- Tires: 12" X 4-1/2" solid rubber
- Backup discs: 2 steel discs per axle
- Optional wheels: Steel, urethane or phenolic

**Control**

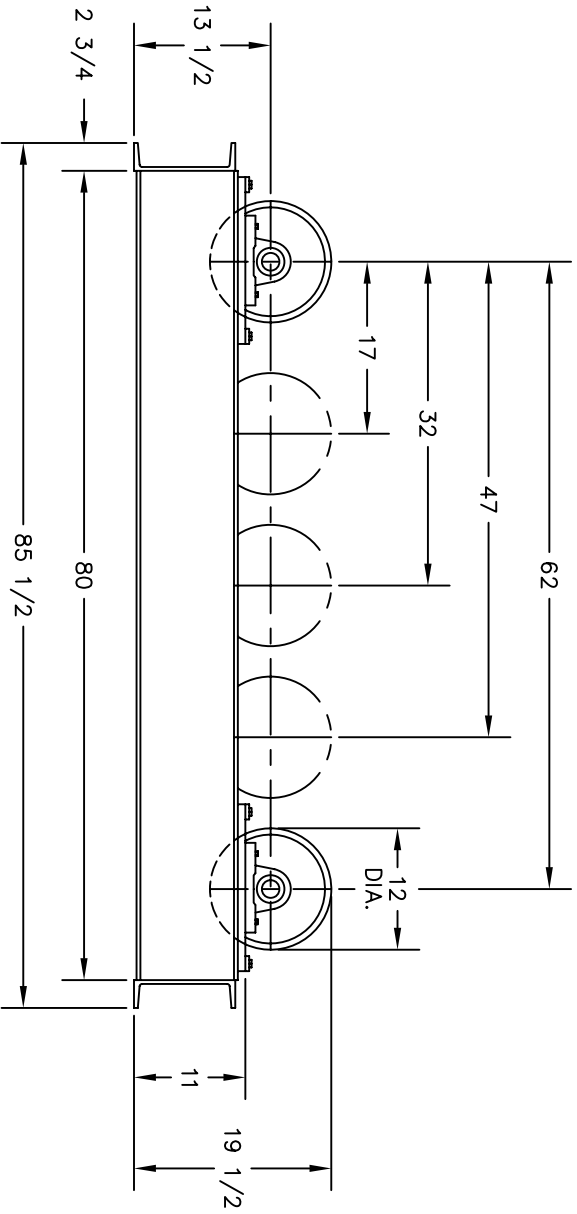
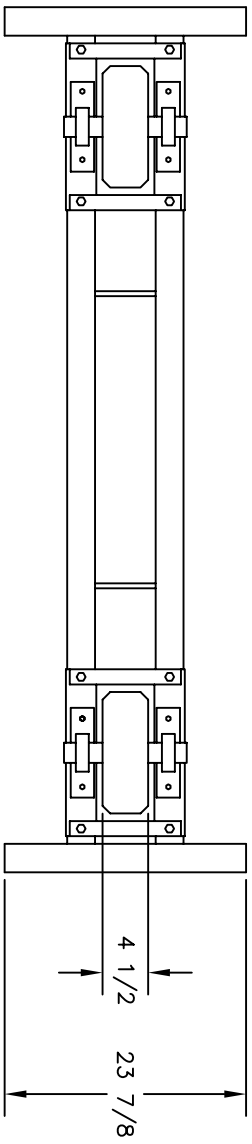
- Pendant: Remote pendant with 30-foot cable
- Optional cable lengths: Available
- Speed control: One-turn potentiometer
- Directional control: Three position selector switch
- Rapid traverse: Two position selector switch
- Power: 115V, single phase

**Weight**

- Driver: 1050 pounds
- Idler: 650 pounds



<b>PRESTON-EASTIN INC.</b> OKLAHOMA		<b>30025</b>	
PROJECT: _____ DRAWING: _____	TITLE: _____ DATE: 8-2-78 DESIGNED BY: B.J.K. CHECKED BY: 4-21-99	PART NO.: _____ REV. NO.: _____	SCALE: 1 OF 1
<b>DIMENSIONAL OUTLINE</b> <b>TDRA-5</b>			
<small>THIS DRAWING AND THE DESIGNS HEREIN ARE THE PROPERTY OF PRESTON-EASTIN INC. REPRODUCTION AND/OR USE WITHOUT WRITTEN PERMISSION IS PROHIBITED.</small>			



<b>PRESTON-EASTIN INC.</b> OKLAHOMA		<b>30016</b>	
PROJECT: _____ DRAWING: _____	TITLE: _____ DATE: 8-2-78 DESIGNED BY: B.J.K. CHECKED BY: 4-21-99	SHEET NO.: _____ OF _____	SCALE: 1 OF 1
<b>DIMENSIONAL OUTLINE</b> <b>TIRA-5</b>			
<small>THIS DRAWING AND THE DESIGNS HEREIN ARE THE PROPERTY OF PRESTON-EASTIN INC. REPRODUCTION AND/OR USE WITHOUT WRITTEN PERMISSION IS PROHIBITED.</small>			