

**Product Data – Turning Rolls****Preston-Eastin Model TDRA-30 HD, TIRA-30 HD****Capacity**

- Weight: 30,000 pounds driver, 30,000 pounds idler
- Turning: 90,000 pounds
- Tractive: 9,400 pounds
- Work piece diameter: 8 inches to 15 feet

**Frame**

- Material: Welded steel channel
- Precision: Jig-drilled roller mounting holes
- Adjustability: Six center distance settings
- Features: Adjustable roller base position
- Constant centerline option: Available

**Drive**

- Wheel speed: 1.5 to 43 inches per minute
- Motor: 2 HP variable duty AC
- Motor control: Variable frequency drive

**Drive train:**

- Gearboxes: Welded steel, worm drive
- Worm: Hardened steel
- Worm gear: 90,000 psi aluminum bronze
- Pillow blocks: Welded steel, tapered roller bearings
- Drive shaft: Tubular steel

**Wheels**

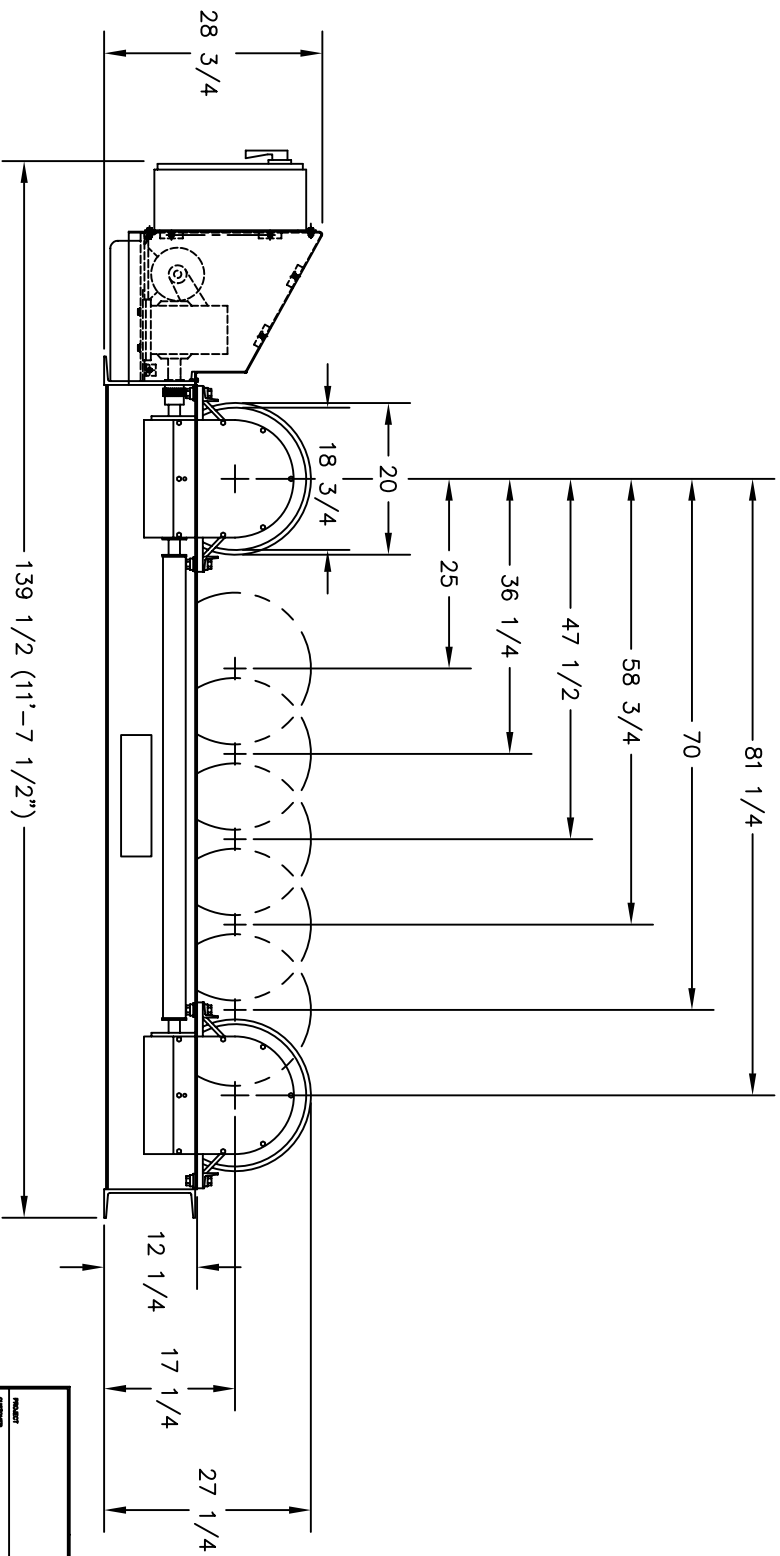
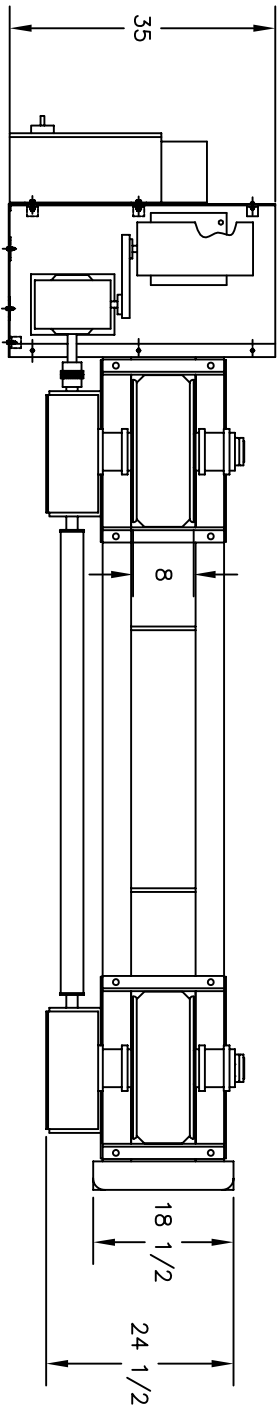
- Tires: 20" X 7" solid rubber, 85 durometer min.
- Backup discs: 2 steel discs per axle
- Optional wheels: Steel, urethane or phenolic

**Control**

- Pendant: Remote pendant with 30-foot cable
- Optional cable lengths: Available
- Speed control: One-turn potentiometer
- Directional control: Three position selector switch
- Rapid traverse: Two position selector switch
- Power: 240 OR 480V, three phase, 60 hz

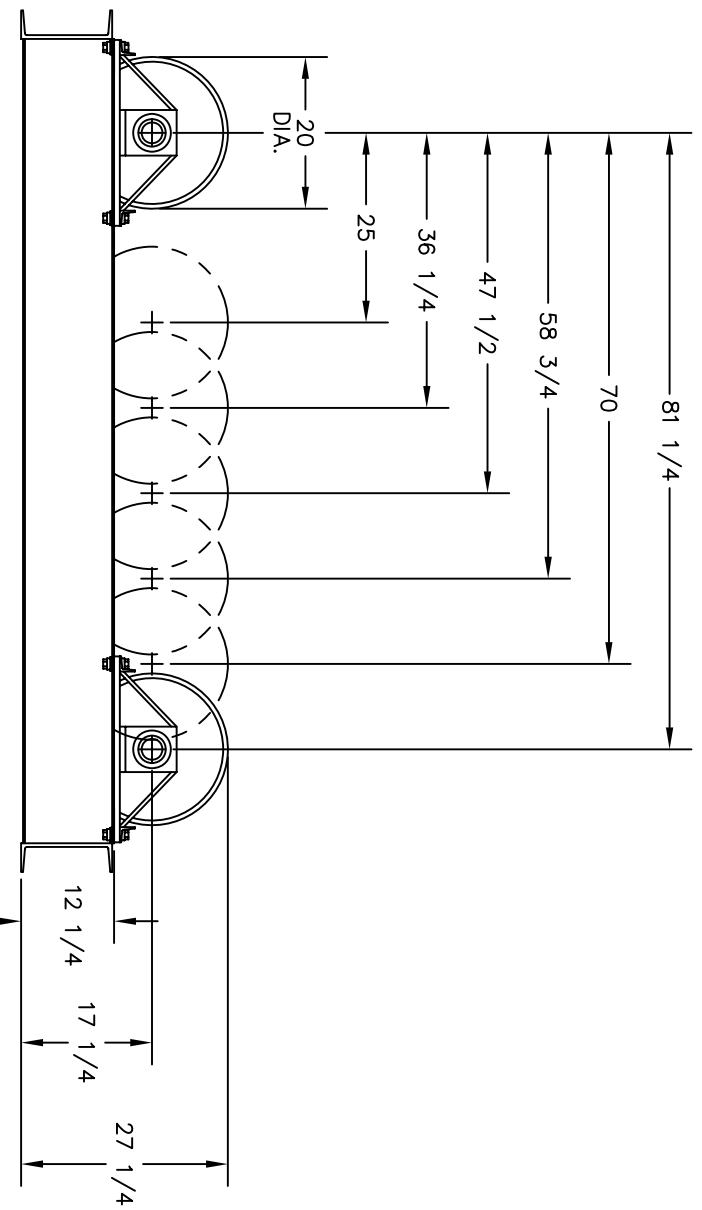
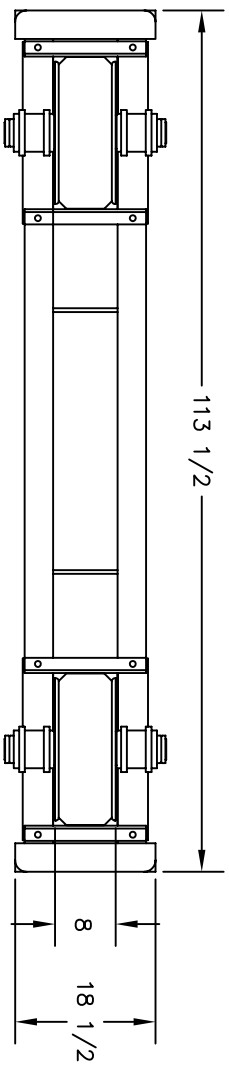
**Weight**

- Driver: 2920 pounds
- Idler: 1700 pounds



<p><b>PRESTON-EASTON INC.</b> OKLAHOMA</p>		<p><b>30065</b></p>	
<p>THIS DRAWING AND THE DESIGNS HEREIN ARE THE PROPERTY OF PRESTON-EASTON INC. REPRODUCTION AND/OR USE WITHOUT WRITTEN PERMISSION IS PROHIBITED.</p>		<p><b>1 OF 1</b> <b>5/95</b> <b>REV 2</b></p>	
<p><b>TDRE-30</b></p>		<p><b>30065</b></p>	
<p><b>GRANT</b></p>		<p><b>12-23-90</b></p>	
<p><b>3-28-96</b></p>		<p><b>10/95</b></p>	
<p><b>TULSA</b></p>		<p><b>10/95</b></p>	

**DIMENSIONAL OUTLINE**



<b>PRESTON-EASTON INC.</b> OKLAHOMA		<b>30067</b>	
MODEL TULSA	DATE 9-22-78	REV. NO. 1 OF 1	DIMENSIONAL OUTLINE TIRE-30
DESIGNER B. COOK	CHECKED B.J.K.	DATE 3-28-96	THIS DRAWING AND THE DESIGNS HEREIN ARE THE PROPERTY OF PRESTON-EASTON INC. REPRODUCTION AND/OR USE WITHOUT WRITTEN PERMISSION IS PROHIBITED.