

Product Data – Turning Rolls**Preston-Eastin Model TDRA-3, TIRA-3****Capacity**

- Weight: 3,000 pounds driver, 3,000 pounds idler
- Turning: 9,000 pounds
- Tractive: 1,250 pounds
- Work piece diameter: 6 inches to 60 inches

Frame

- Material: Welded steel
- Precision: Machined alignment slots
- Adjustability: Three center distance settings

Drive

- Wheel speed: 1.5 to 45 inches per minute
- Motor: 1/4 HP variable speed DC
- Motor control: Solid-state with dynamic braking

Drive train:

- Gearboxes: Welded steel, worm drive
- Worm: Hardened steel
- Worm gear: Aluminum bronze

Wheels

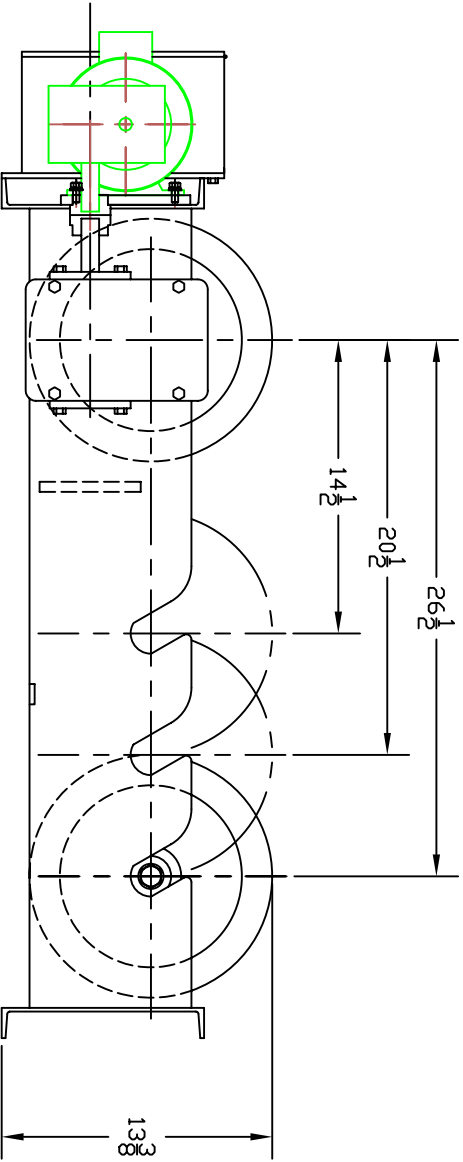
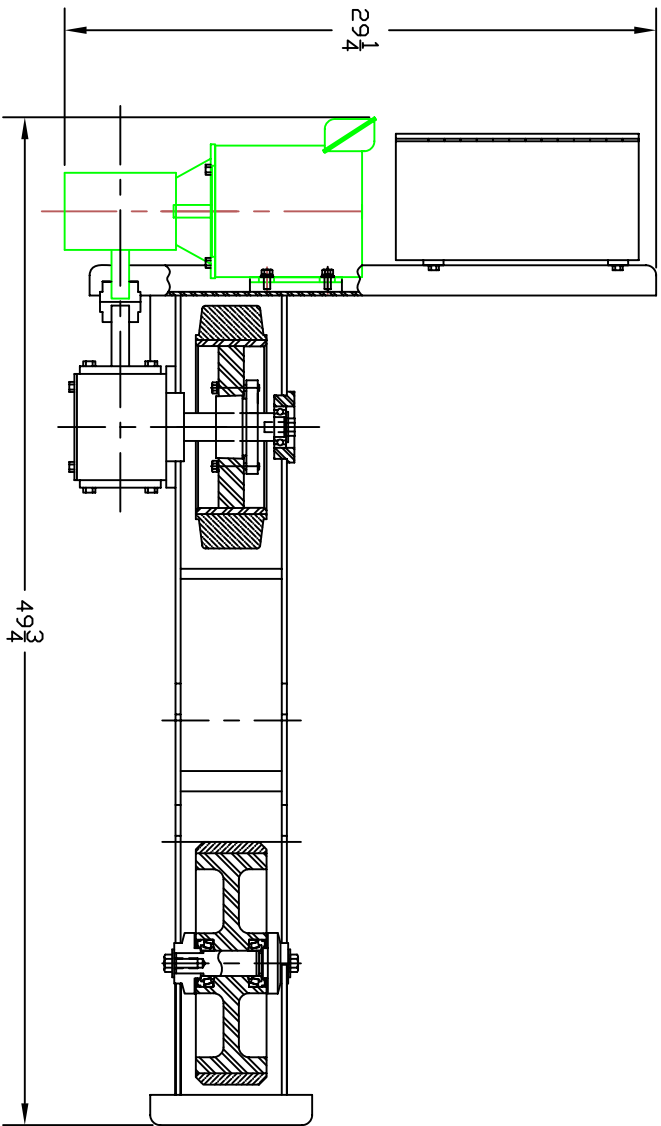
- Tires: 12" X 3-1/2" solid rubber

Control

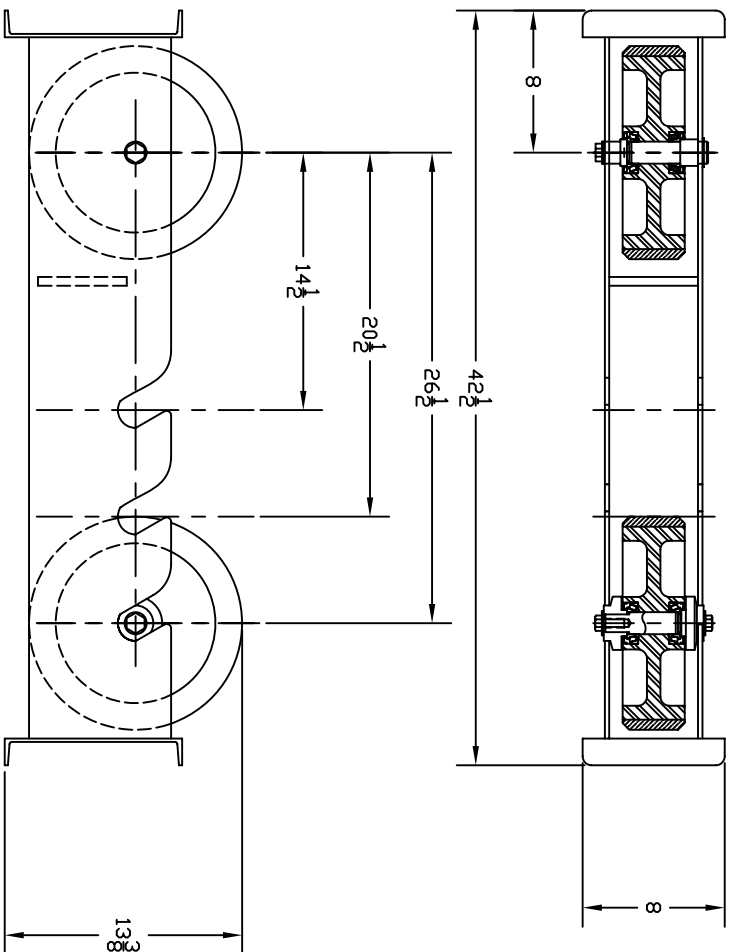
- Pendant: Start/stop with 30-foot cable
- Optional cable lengths: Available
- Speed control: One-turn potentiometer
- Directional control: Three position selector switch
- Foot control: Variable speed with 30-foot cable
- Power: 115V, single phase

Weight

- Driver: 253 pounds
- Idler: 96 pounds



<p>PRESTON-EASTIN INC.</p> <p>OKLAHOMA</p>		<p>TULSA</p>	
<p>PROJECT</p>		<p>DATE</p>	
<p>DESCRIPTION</p>		<p>REV.</p>	
<p>43589</p>		<p>5/10/05</p>	
<p>DIMENSIONAL OUTLINE</p>		<p>TDR-3</p>	
<p>THIS DRAWING AND THE DESIGNS HEREIN ARE THE PROPERTY OF PRESTON-EASTIN INC. REPRODUCTION AND/OR USE WITHOUT WRITTEN PERMISSION IS PROHIBITED.</p>			



PRESTON-EASTIN INC. <small>TULSA OKLAHOMA</small>		DIMENSIONAL OUTLINE TIRA-3	
<small>REV.</small> 1 <small>DATE</small> 08/03/05	<small>BY</small> BS	<small>REV.</small> 1 <small>DATE</small> 08/03/05	<small>BY</small> BS
<small>NO.</small> 43611	<small>REV.</small> 1	<small>NO.</small> 43611	<small>REV.</small> 1
<small>THIS DRAWING AND THE DESIGNS HEREON ARE THE PROPERTY OF PRESTON-EASTIN INC. REPRODUCTION AND/OR USE WITHOUT WRITTEN PERMISSION IS PROHIBITED.</small>		<small>THIS DRAWING AND THE DESIGNS HEREON ARE THE PROPERTY OF PRESTON-EASTIN INC. REPRODUCTION AND/OR USE WITHOUT WRITTEN PERMISSION IS PROHIBITED.</small>	