

Product Data – Turning Rolls**Preston-Eastin Model TDRA-15 HD, TIRA-15 HD****Capacity**

- Weight: 15,000 pounds driver, 15,000 pounds idler
- Turning: 45,000 pounds
- Tractive: 5,500 pounds
- Work piece diameter: 6 inches to 12 feet

Frame

- Material: Welded steel channel
- Precision: Jig-drilled roller mounting holes
- Adjustability: Six center distance settings
- Features: Adjustable roller base position
- Constant centerline option: Available

Drive

- Wheel speed: 1.9 to 57 inches per minute
- Motor: 1.5 HP variable speed DC
- Motor control: Solid-state with dynamic braking

Drive train:

- Gearboxes: Welded steel, worm drive
- Worm: Hardened steel
- Worm gear: 90,000 psi aluminum bronze
- Pillow blocks: Welded steel, tapered roller bearings
- Drive shaft: Tubular steel

Wheels

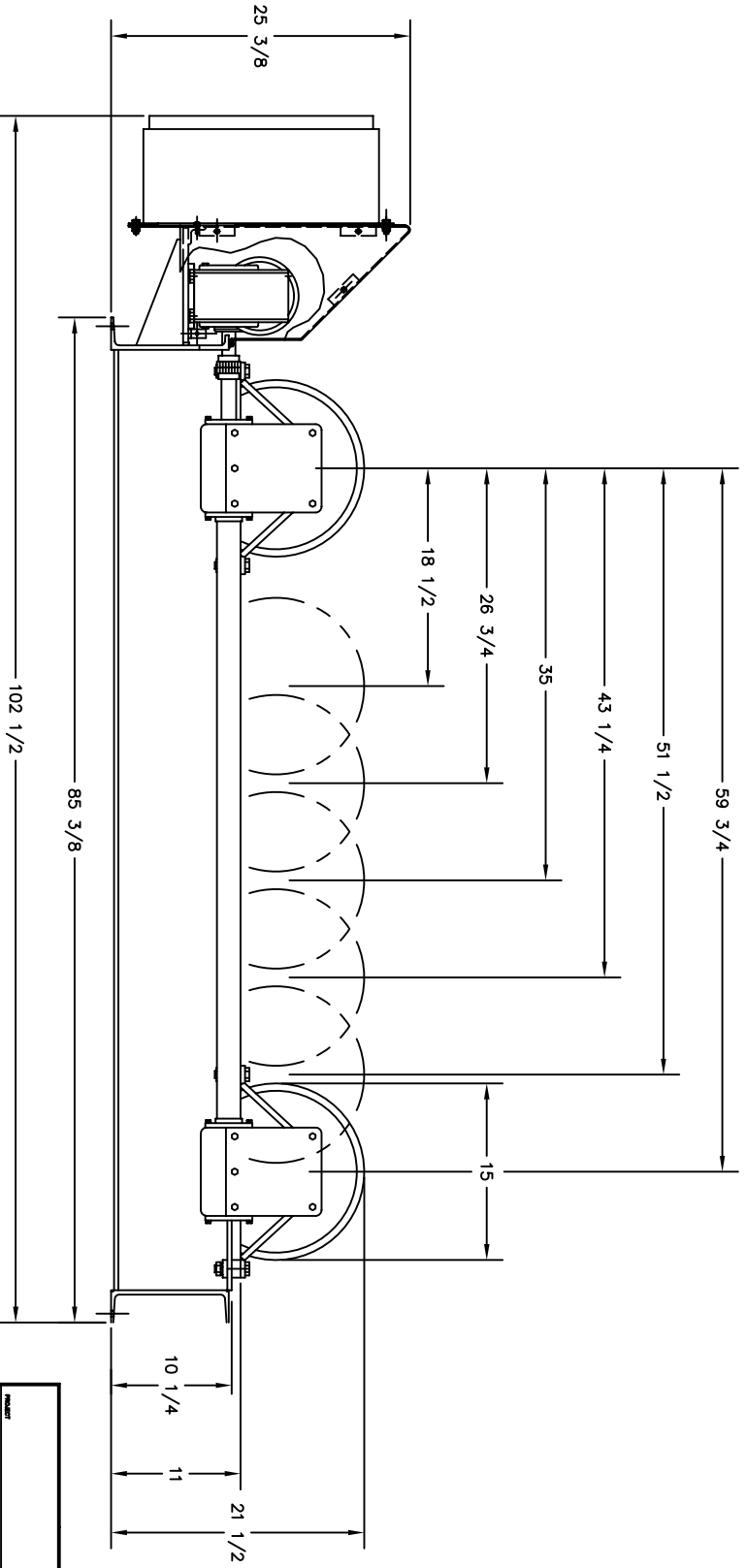
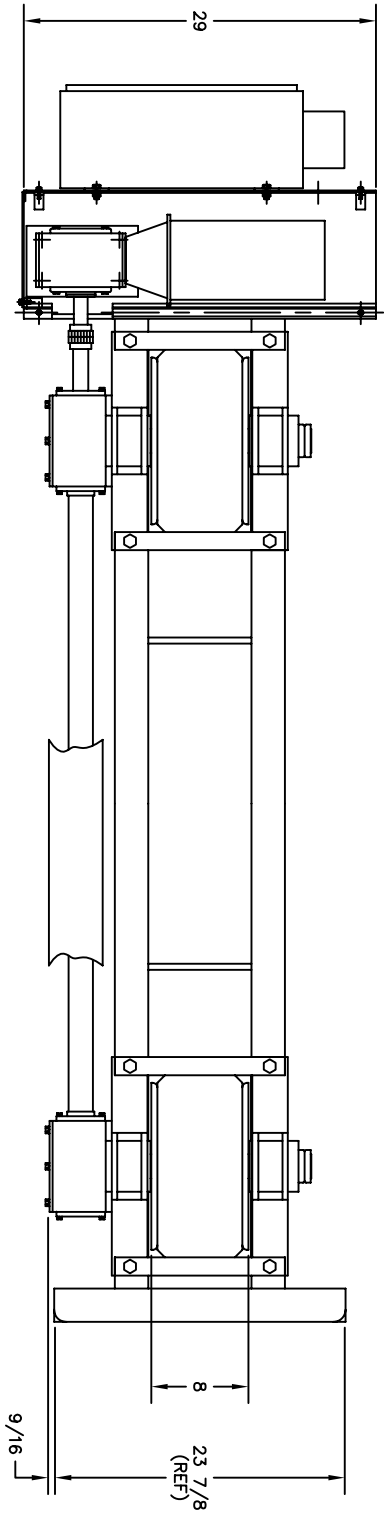
- Tires: 15" X 7" solid rubber
- Backup discs: 2 steel discs per axle
- Optional wheels: Steel, urethane or phenolic

Control

- Pendant: Remote pendant with 30-foot cable
- Optional cable lengths: Available
- Speed control: One-turn potentiometer
- Directional control: Three position selector switch
- Rapid traverse: Two position selector switch
- Power: 115V, single phase

Weight

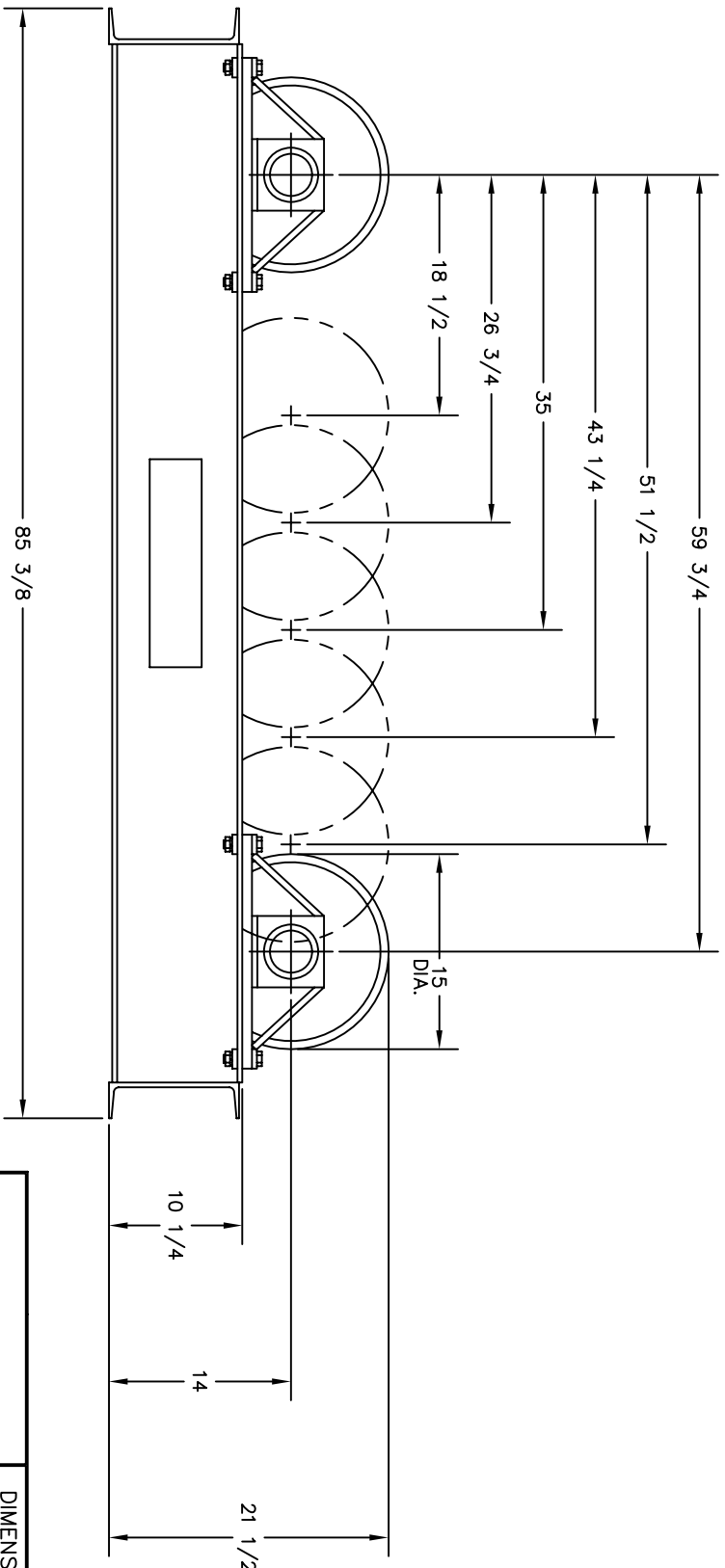
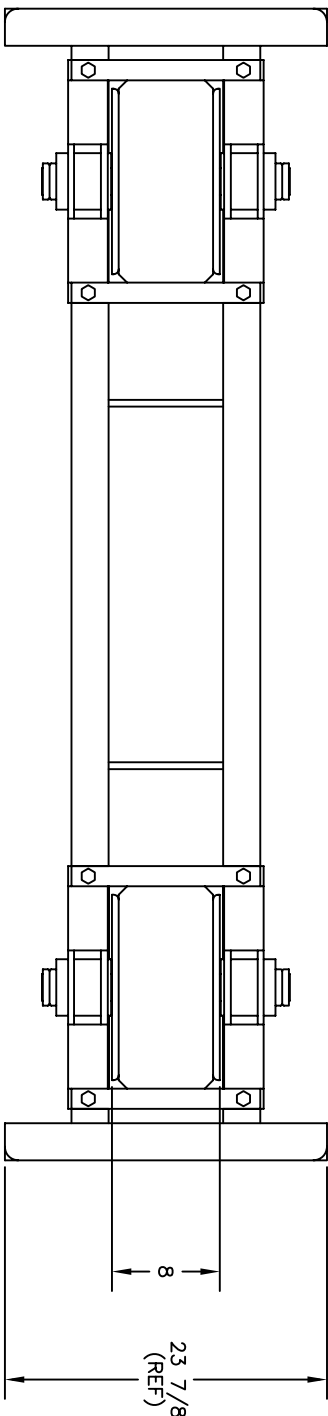
- Driver: 1400 pounds
- Idler: 850 pounds



PRESTON-EASTIN INC. OKLAHOMA		OKLAHOMA	
TULSA	PRESTON-EASTIN INC.	TULSA	PRESTON-EASTIN INC.
NAME: B. COOK DATE: 11-03-94 DRAWN BY: B.J.K. DATE: 4-22-99	TITLE: TDR-15 PART NO.: 30743	NAME: B. COOK DATE: 11-03-94 DRAWN BY: B.J.K. DATE: 4-22-99	TITLE: TDR-15 PART NO.: 30743

THIS DRAWING AND THE DESIGNS HEREIN ARE THE PROPERTY OF PRESTON-EASTIN INC. REPRODUCTION AND/OR USE WITHOUT WRITTEN PERMISSION IS PROHIBITED.

DIMENSIONAL OUTLINE



PRESTON-EASTON INC. OKLAHOMA		30747	
PROJECT: CUSTOMER: TITLE:	DRAWN BY: DATE:	CHECKED BY: DATE:	DIMENSIONAL OUTLINE TIRA-15
TULSA	B. COOK 10-20-94	B. J. K. 4-22-99	1 OF 1

THIS DRAWING AND THE DESIGNS HEREIN ARE THE PROPERTY OF PRESTON-EASTON INC. REPRODUCTION AND/OR USE WITHOUT WRITTEN PERMISSION IS PROHIBITED.