

Product Data – Positioners**Preston-Eastin Model PA-5 MT****Capacity**

- Weight: 500 pounds
- Offset of C.G. from table: 4 inches
- Eccentricity of C.G. from axis: 4 inches

Rotation

- Motor: Variable speed DC, 1/4 horsepower
- Speed range: 0.2 to 3.7 rpm
- Speed accuracy: 3% of base speed

Tilt

- Range: 135 degrees forward tilt
- Tilt torque: Manual
- Actuation: 8 inch hand wheel with self-locking worm drive

Table:

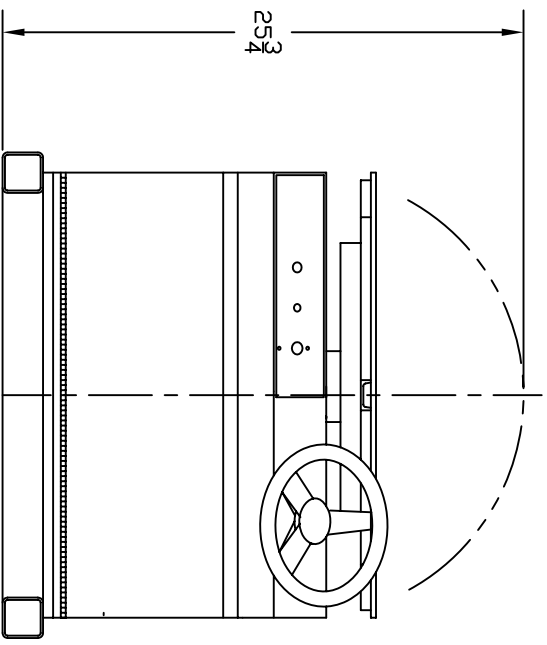
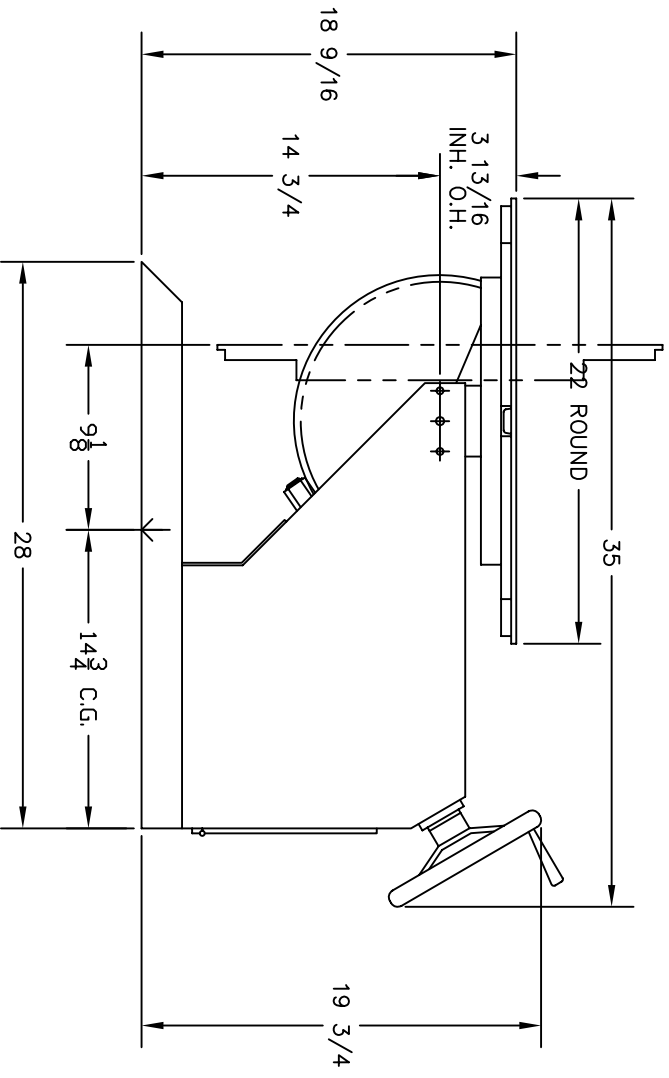
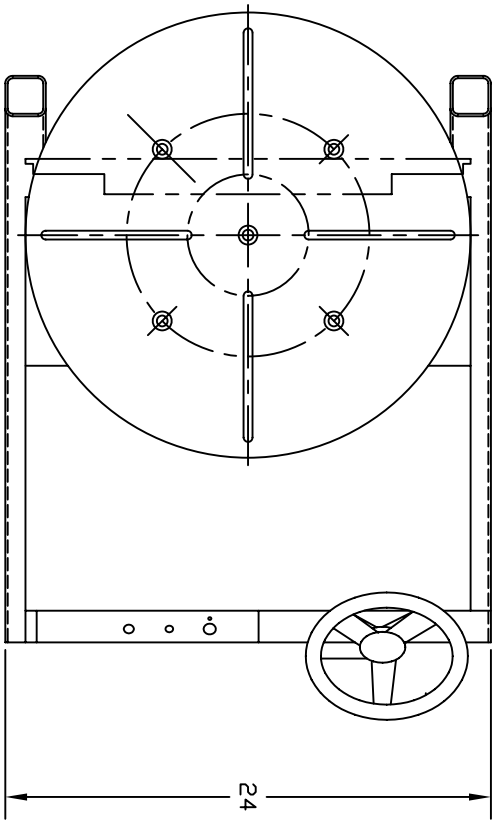
- Diameter: 22 inch round with four radial T-slots
- Mounting bolt size: 3/8 inch
- Bearings: Timken tapered roller bearings
- Ground: 600 amp spring-loaded mechanical ground

Controls

- Control panel: Panel built-in to positioner frame
- Speed control: One-turn potentiometer
- Directional control: Two-position selector switch
- Power: 115V, 15A, single phase, 60 hertz.
- Overload protection: Circuit breaker
- Foot switch: Remote start/stop with 6 foot cable

Weight

- Shipping weight: 365 pounds



PRESTON-EASTMAN INC. OKLAHOMA		DIMENSIONAL OUTLINE PA-5 MT	
DESIGNER B. COOK	DATE 11-17-53	DRAWN B.J.K.	CHECKED 4-02-57
TULSA	20722	20722	20722
<small>THIS DRAWING AND THE DESIGNS HEREIN ARE THE PROPERTY OF PRESTON-EASTMAN INC. REPRODUCTION AND/OR USE WITHOUT WRITTEN PERMISSION IS PROHIBITED.</small>			