

Product Data – Positioners**Preston-Eastin Model PA-240HD12****Capacity**

- Weight: 24,000 pounds
- Offset of C.G. from table: 12 inches
- Eccentricity of C.G. from axis: 12 inches

Rotation

- Motor: Variable speed DC, 5 horsepower
- Speed range: 0.02 to .59 rpm
- Speed accuracy: 2% of set speed

Tilt

- Motor: AC brakemotor, 7.5 horsepower
- Range: 135 degrees forward tilt
- Inherent overhang: 9.25 inches

Elevation:

- Adjustment: Manual
- Range: 60 inches to 84 inches in 6 inch increments

Table:

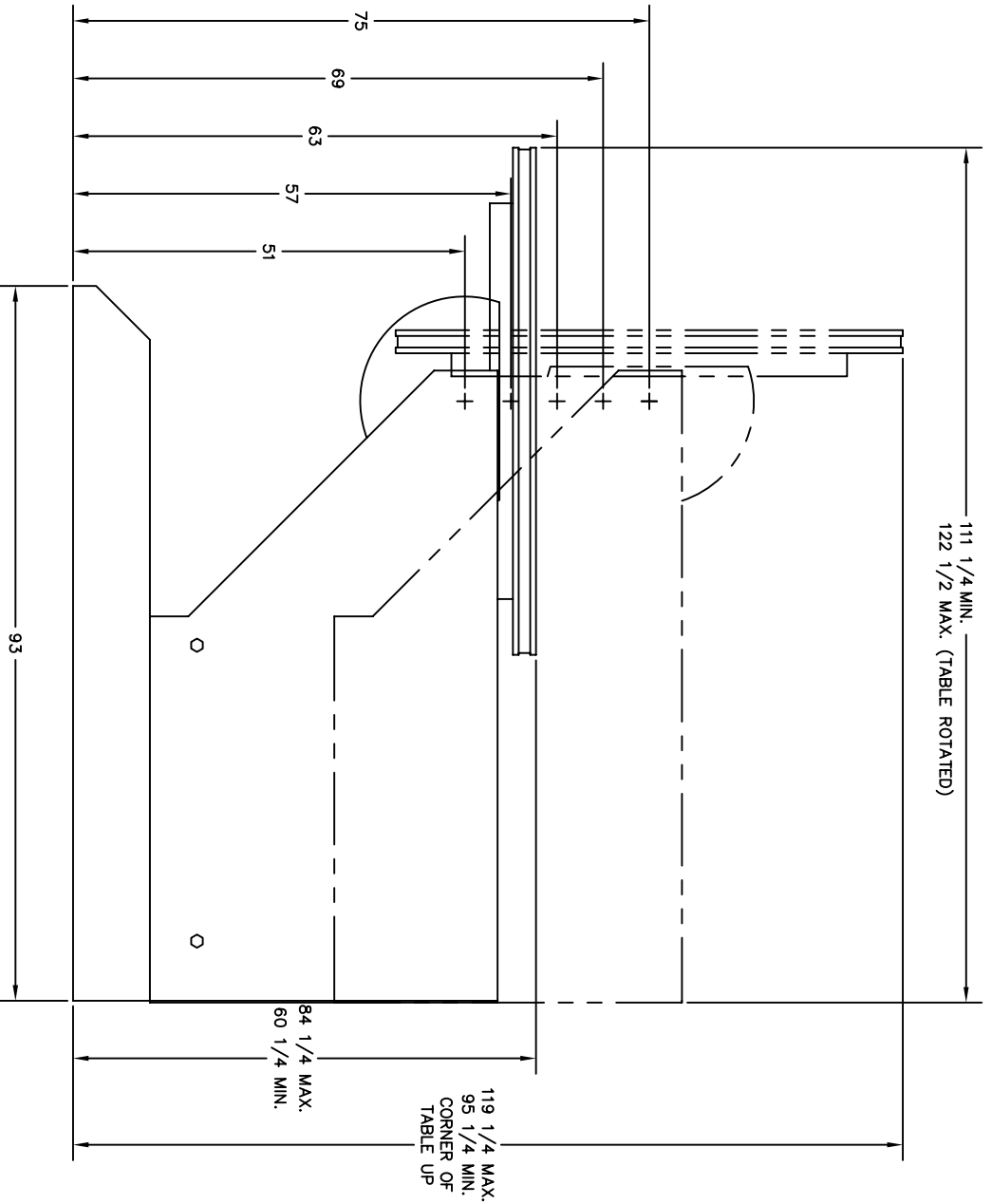
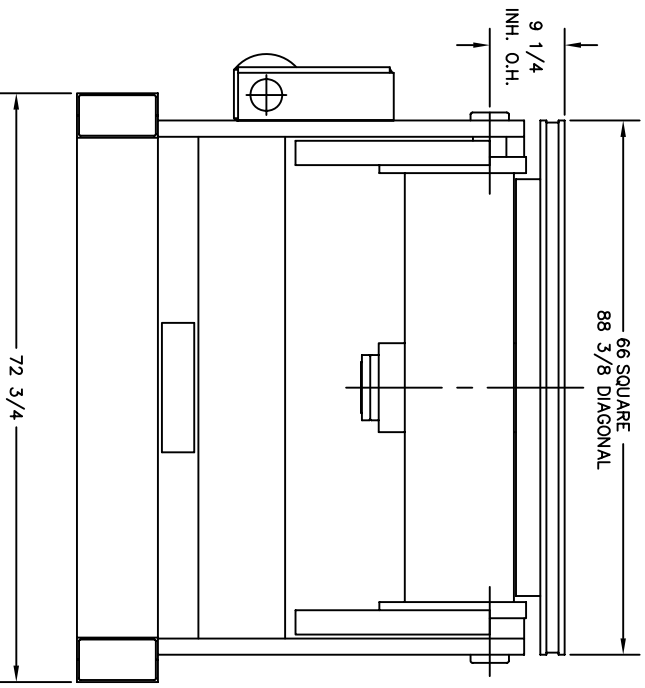
- Diameter: 60 inch square with four radial T-slots
- Mounting bolt size: 1 inch
- Bearings: Timken tapered roller bearings
- Ground: 2 each 600 amp spring-loaded mechanical ground

Controls

- Pendant: Remote pendant, 115V, w 30 foot cable
- Rotation speed: One-turn potentiometer
- Rotation mode: Two-position selector switch, WELD/RAPID
- Rotation direction: Three-position selector switch, FWD/OFF/REV
- Rotation control: START and STOP pushbuttons
- Tilt directional control: Three-position momentary switch, UP/OFF/DOWN
- Power: 460/230V, 15/30A, three phase, 60 hertz.
- Overload protection: Circuit breaker
- Foot switch: Optional

Weight

- Shipping weight: 12,500 pounds



PRESTON-EASTON INC. OKLAHOMA		20198	
PROJECT CUSTOMER TITLE DATE	MODEL GRANT DATE 1-15-81 DESIGNED BY J.K. DATE 4-21-89	PART NO. 20198	SHEET NO. 1 OF 1
DIMENSIONAL OUTLINE PA-240			

THIS DRAWING AND THE DESIGNS HEREIN ARE THE PROPERTY OF PRESTON-EASTON INC. REPRODUCTION AND/OR USE WITHOUT WRITTEN PERMISSION IS PROHIBITED.