

Product Data – Positioners**Preston-Eastin Model PA-1 MT****Capacity**

- Horizontal weight: 200 pounds (table in horizontal plane)
- Vertical weight: 100 pounds (table in vertical plane)
- Offset of C.G. from table: 1 inch
- Eccentricity of C.G. from axis: 1 inch

Rotation

- Motor: Variable speed DC, 1/12 horsepower
- Speed range: 0.3 to 9.0 rpm

Tilt

- Range: 90 degrees forward tilt
- Actuation: 4-1/2 inch hand wheel with self-locking worm drive

Table:

- Diameter: 12 inch diameter, round, with four radial T-slots
- Mounting bolt size: 5/16 inch
- Grounding: 250 amp mechanical ground

Controls

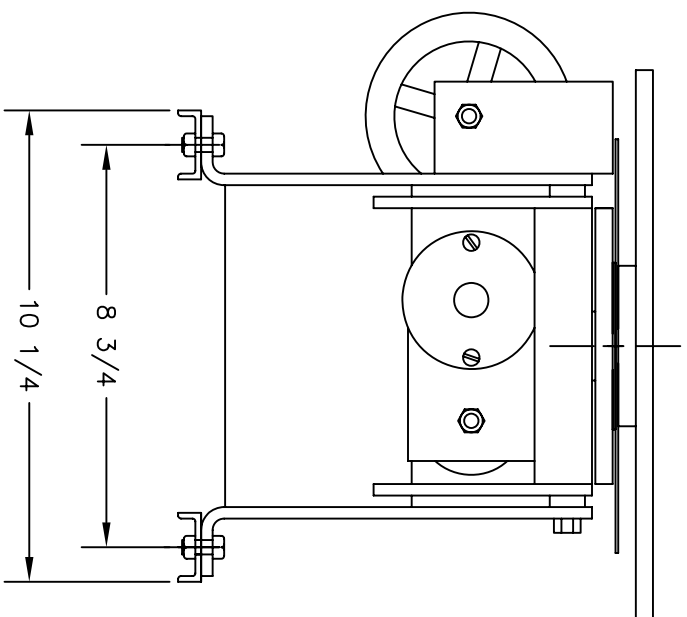
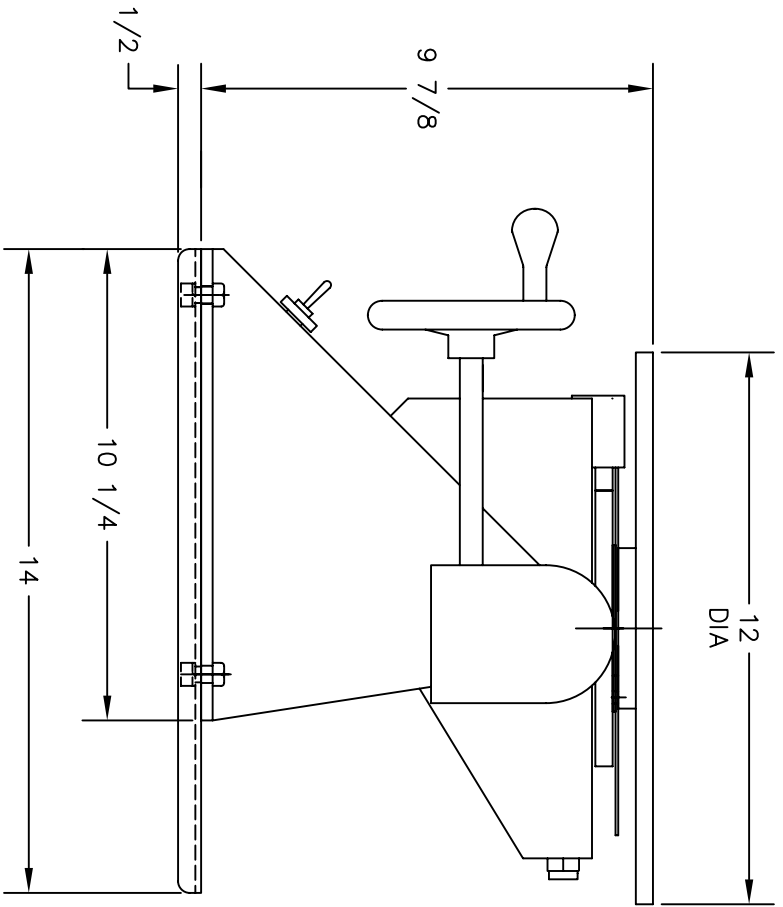
- Control panel: Panel built-in to positioner frame
- Speed control: One-turn potentiometer
- Directional control: Two-position selector switch
- Power: 115V, 2A, single phase, 60 hertz.
- Overload protection: On/Off switch with fuse
- Foot switch: Remote start/stop with 6 foot cable

Options:

- Additional table speeds: 0.2 to 4.5 and 0.6 to 18 rpm
- Through spindle gas purging
- Heavy-duty on-off foot switch
- Foot switch guard
- Variable speed foot switch
- Spin-loc chucks
- 3-jaw scroll chucks

Weight

- Shipping weight: 56 pounds



DIMENSIONAL OUTLINE

PA-1

<p>PRESTON-EASTON INC. OKLAHOMA</p>		<p>DATE: MAR 0</p>		<p>20853</p>	
<p>TULSA</p>		<p>DATE: 11/17/00</p>		<p>REV. NO.</p>	
<p>THIS DRAWING AND THE DESIGNS HEREIN ARE THE PROPERTY OF PRESTON-EASTON INC. REPRODUCTION AND/OR USE WITHOUT WRITTEN PERMISSION IS PROHIBITED.</p>		<p>REV. NO.</p>		<p>REV.</p>	