

**Product Data – Positioners****Preston-Eastin Model PA-15 HD4****Capacity**

- Weight: 1500 pounds
- Offset of C.G. from table: 4 inches
- Eccentricity of C.G. from axis: 4 inches

**Rotation**

- Motor: Variable speed DC, 1/2 horsepower
- Speed range: 0.12 to 3.6 rpm
- Speed accuracy: 2% of set speed

**Tilt**

- Motor: DC gearmotor, 1/4 horsepower
- Range: 135 degrees forward tilt
- Inherent overhang: 4.25 inches

**Elevation:**

- Adjustment: Manual
- Range: 22-1/4" to 34-1/4" in 4" increments

**Table:**

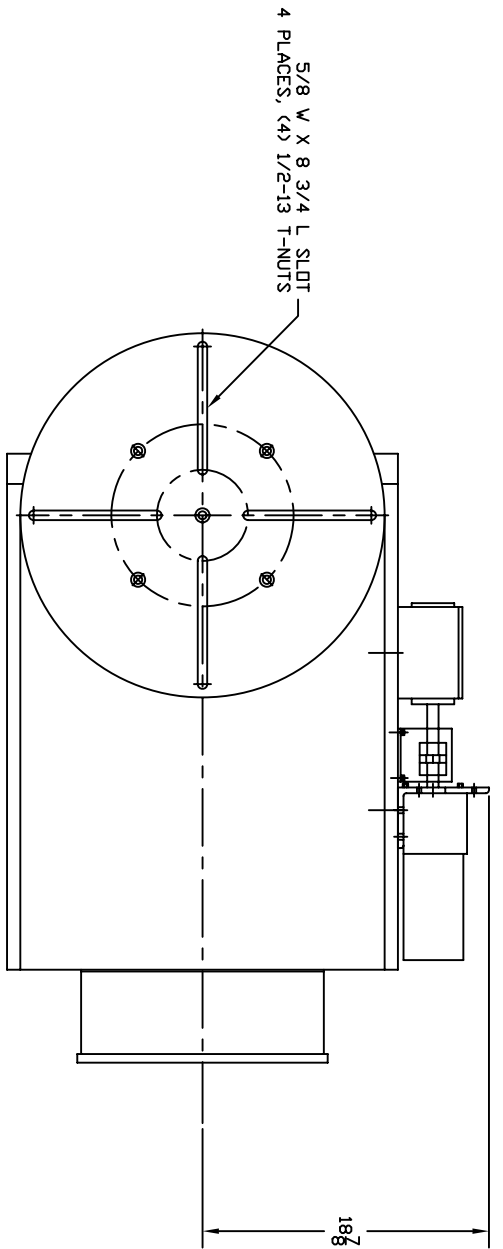
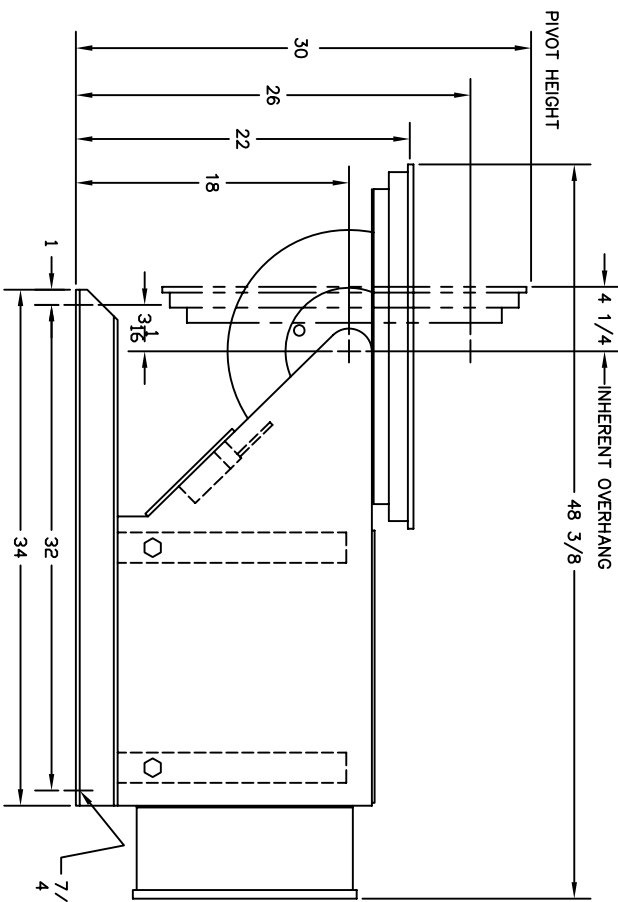
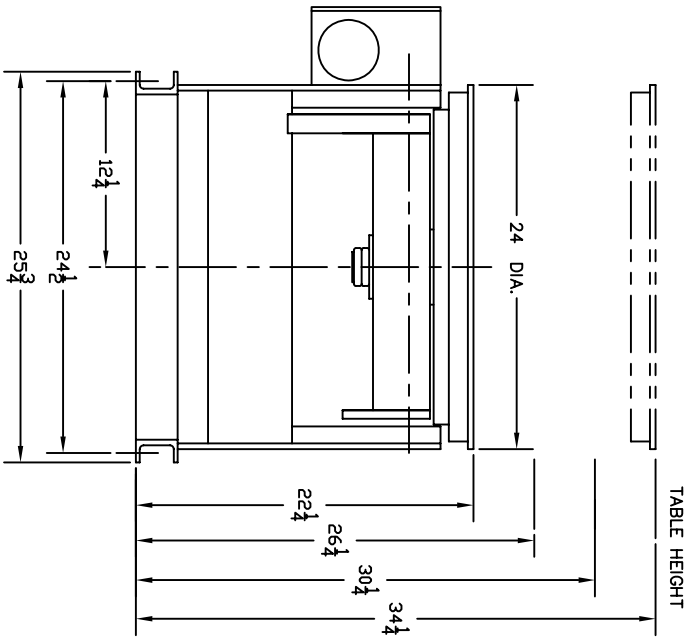
- Diameter: 24 inch diameter with four radial T-slots
- Mounting bolt size: 1/2 inch
- Bearings: Timken tapered roller bearings
- Ground: 600 amp spring-loaded mechanical ground

**Controls**

- Pendant: Remote pendant, 115V, w 30 foot cable
- Rotation speed: One-turn potentiometer
- Rotation mode: Two-position selector switch, WELD/RAPID
- Rotation direction: Three-position selector switch, FWD/OFF/REV
- Rotation control: START and STOP pushbuttons
- Tilt control: Three-position selector switch, UP/OFF/DOWN
- Power: 115V, 20A, single phase, 60 hertz.
- Overload protection: Circuit breaker
- Foot switch: Optional

**Weight**

- Shipping weight: 750 pounds



115 VAC  
15 A  
60 HZ

<b>PRESTON-EASTIN INC.</b> OKLAHOMA		MODEL: PA-15 HD-4 SERIAL: B, COOK DATE: 5-24-85 REVISED: B, L.K. DATE: 5-19-87	20723	9/04 REV. 3
DIMENSIONAL OUTLINE				
THIS DRAWING AND THE DESIGNS HEREIN ARE THE PROPERTY OF PRESTON-EASTIN INC. REPRODUCTION AND/OR USE WITHOUT WRITTEN PERMISSION IS PROHIBITED.				