

Product Data – Manipulators**Preston-Eastin Model MA-66 MD****Capacity**

- Weight: 150 pounds on each or either end
- Travel: 6 feet actual vertical and horizontal travel

Vertical axis

- Construction: Structural steel with continuously welded roundways
- Motor: 1/2 HP AC brakemotor
- Lift speed: 30 inches per minute
- Rollers: Hardened steel on eccentric shafts
- Safety: Spring-applied locking device limits uncontrolled vertical travel

Horizontal axis

- Construction: Structural steel with continuously welded roundways
- Motor: 1/2 HP variable speed DC
- Ram speed: 4.0 to 100 inches per minute
- Ram speed accuracy: 2% of base speed
- Rollers: Hardened steel on eccentric shafts

Base

- Construction: Welded steel
- Bearings: Tapered-roller bearings
- Locks: Two friction locks
- Standard base plate: Six 3/4 inch holes on a 13 inch bolt circle

Control

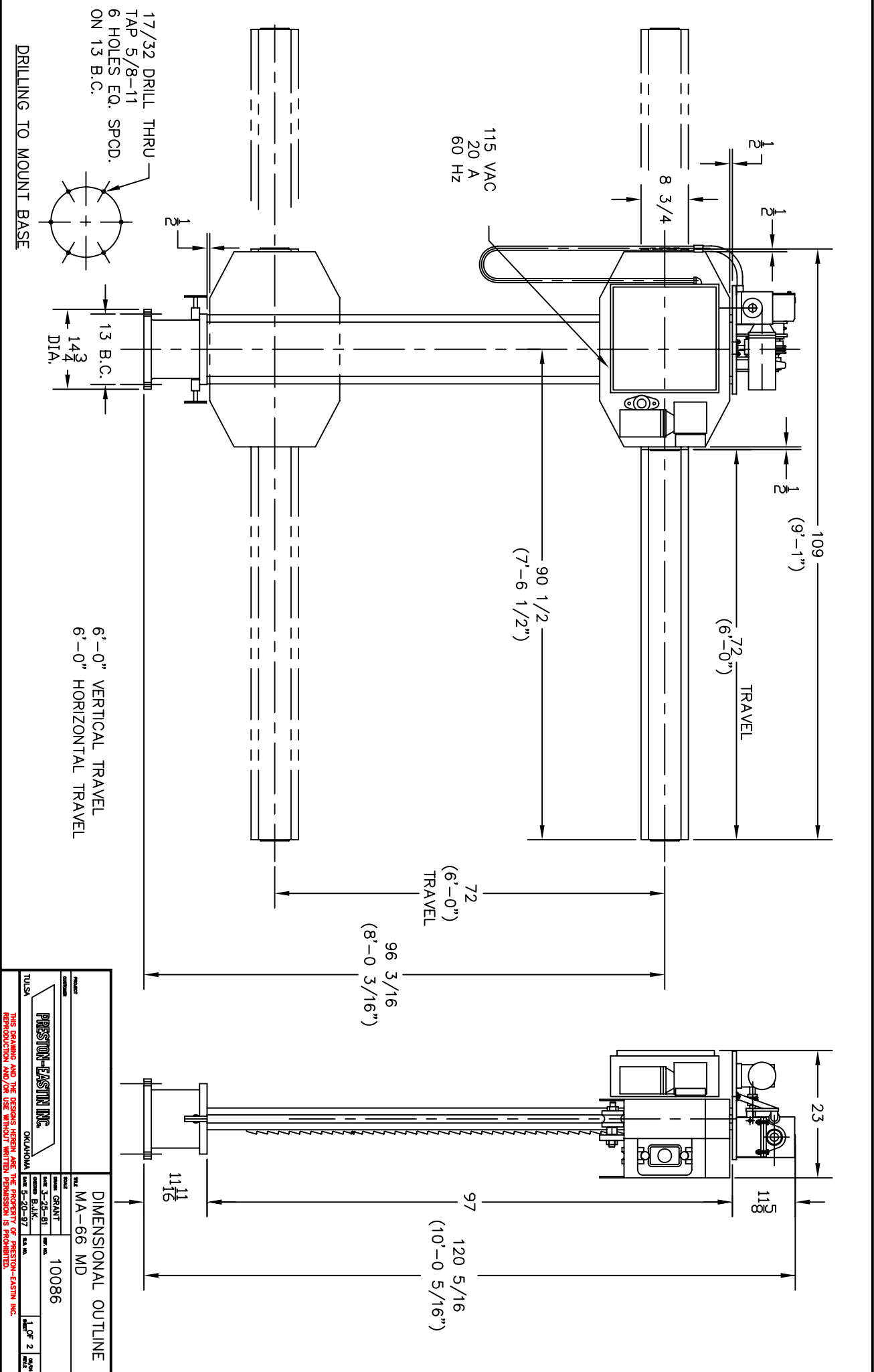
- Pendant: Remote pendant with 30-foot cable
- Optional cable lengths: Available
- Ram speed control: One-turn potentiometer
- Ram Weld/Rapid Traverse: Two position selector switch
- Ram Fwd/Off/Rev: Three position selector switch
- Ram Start/Stop: Two individual pushbuttons
- Mast Up/Off/Down: Three position selector switch
- Power: 115 volts, single phase, 60 hertz

Weight

- Manipulator: 3000 pounds
- Optional free-standing base: 1270 pounds
- Optional travel car, 20' track: 7100 pounds

Options

- Additional travel, vertical or horizontal
- Powered travel car and track, (TCV-39/96 and TSV-1)
- Free-standing, four-leg base
- Digital LED ram speed indicator



PRESTON-EASTON INC. OKLAHOMA		DIMENSIONAL OUTLINE MA-66 MD	
TULSA OKLAHOMA	GRANT 3-25-81 B.J.K. 5-20-87	10086	1 OF 2

THIS DRAWING AND THE DESIGNS HEREIN ARE THE PROPERTY OF PRESTON-EASTON INC. REPRODUCTION AND/OR USE WITHOUT WRITTEN PERMISSION IS PROHIBITED.