

**Product Data – Fit Up Rolls  
Preston-Eastin Model FUDSA-15****Capacity**

- Weight: 15 tons
- Work piece diameter: 18 inches to 10 feet

**Frame**

- Material: Welded steel channel
- Precision: Jig-drilled roller mounting holes
- Adjustability: Three center distance settings
- Features: Adjustable roller base position
- Constant centerline option: Available

**Drive**

- Wheel speed: 1.4 to 40 inches per minute
- Motor: 3/4 HP variable speed DC
- Motor control: Solid-state with dynamic braking

**Drive train:**

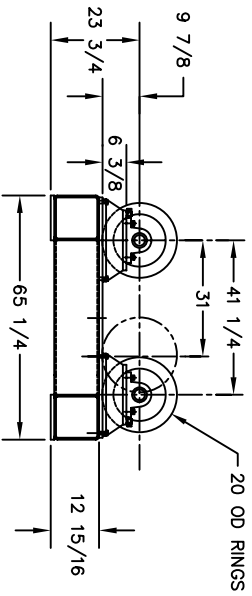
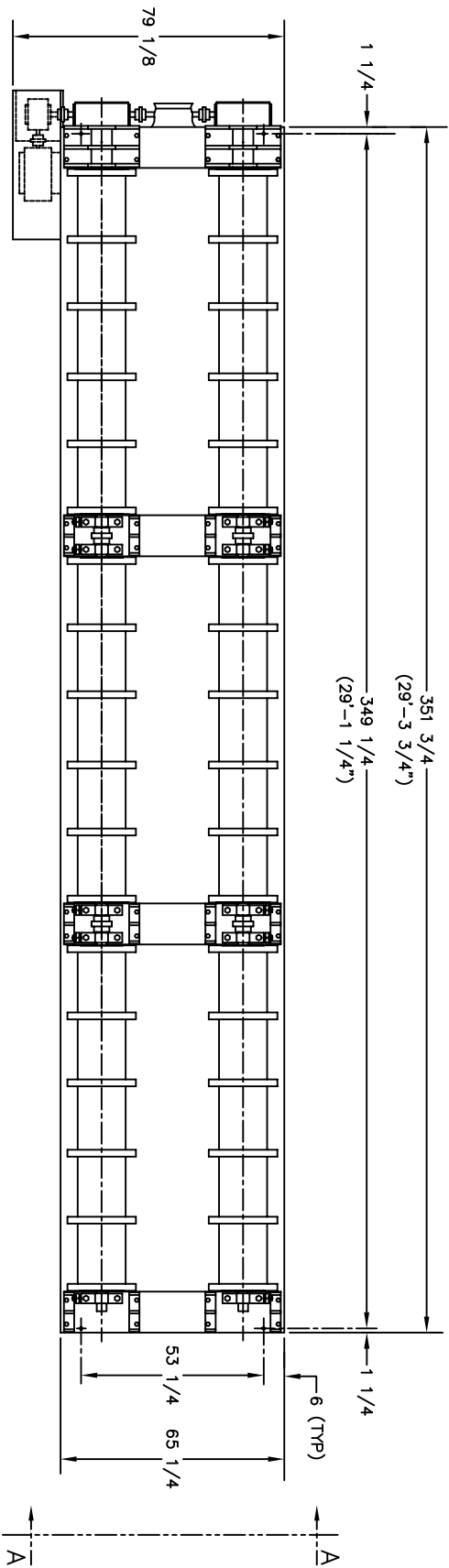
- Gearboxes: Welded steel, worm drive
- Worm: Hardened steel
- Worm gear: 90,000 psi aluminum bronze
- Pillow blocks: Welded steel, tapered roller bearings
- Drive shaft: Tubular steel

**Wheels**

- Material: 10-3/4" dia. steel with 2" face

**Control**

- Pendant: Remote pendant with 30-foot cable
- Optional cable lengths: Available
- Speed control: One-turn potentiometer
- Directional control: Three position selector switch
- Rapid traverse: Two position selector switch
- Power: 115V, single phase



VIEW A-A

DIMENSIONAL OUTLINE

FILE: FUDSA-25

NUMBER	DATE	BY	CHKD.
CUSTOMER	ENGINE B.L.K.	DATE 3-26-97	REV. NO. 30907
PRESTON-EASTIN INC.		OKLAHOMA	
TULSA		OKLAHOMA	

THIS DRAWING AND THE DESIGNS HEREIN ARE THE PROPERTY OF PRESTON-EASTIN INC. PERMISSION AND/OR USE WITHOUT WRITTEN PERMISSION IS PROHIBITED.