

**Product Data – Turning Rolls
Preston-Eastin Model FDR-3, FIR-3****Capacity**

- Weight: 3,000 pounds driver, 3000 pounds each idler
- Turning: 9,000 pounds
- Tractive: 1,250 pounds
- Work piece diameter: 3-1/2 inches to 30 inches

Frame

- Material: Welded steel
- Precision: Jig-drilled roller mounting holes

Drive

- Wheel speed: 1.5 to 45 inches per minute
- Motor: 1/4 HP variable speed DC
- Motor control: Solid-state with dynamic braking

Drive train:

- Gearboxes: Welded steel, worm drive
- Worm: Hardened steel
- Worm gear: cast iron

Wheels

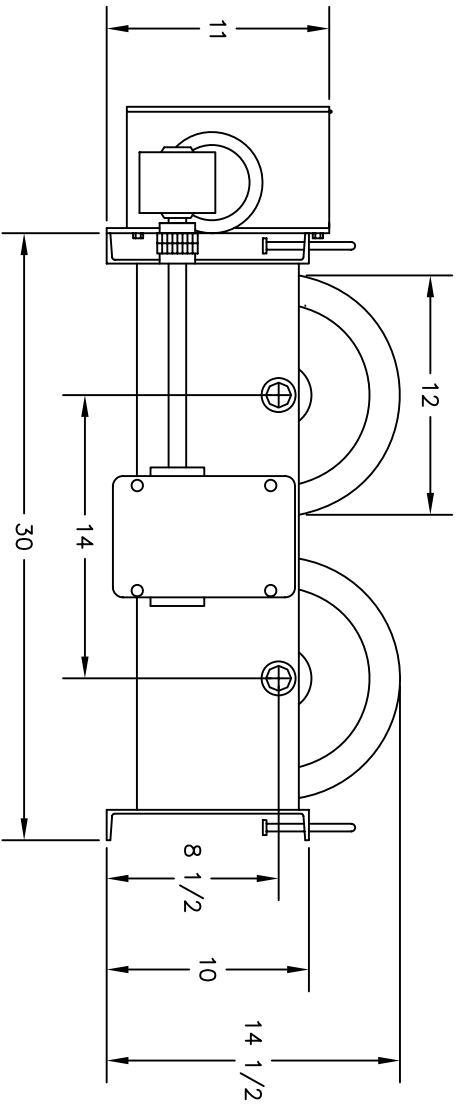
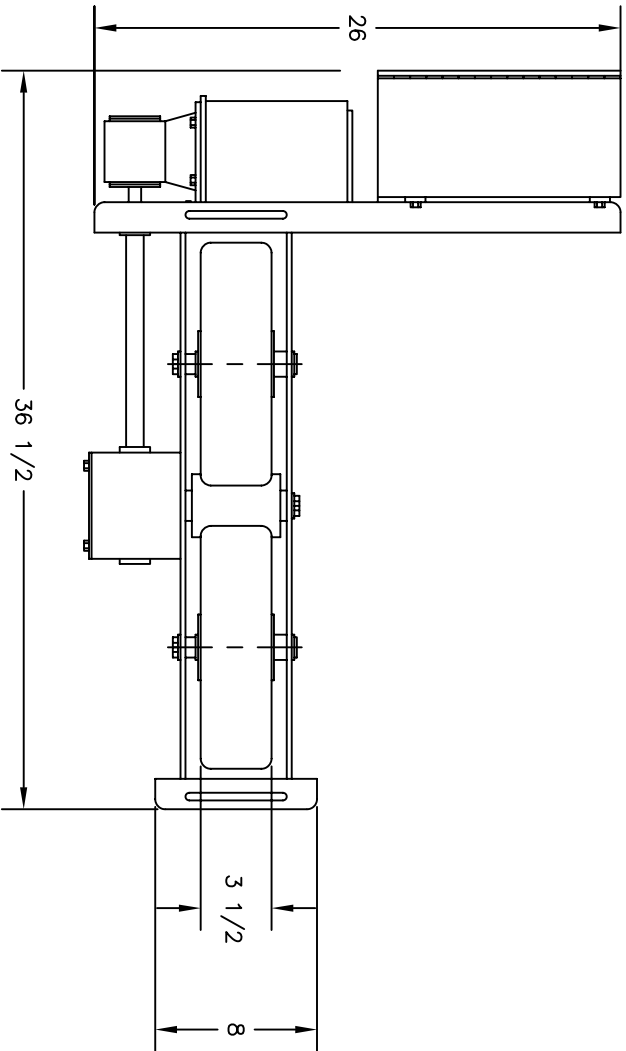
- Tires: 12" X 3.5" solid rubber

Control

- Panel station
 - Directional control: Three-position selector switch, FWD/STOP/REV
 - Wheel speed: 1 turn potentiometer
 - Control selection: Selector switch for pendant or foot control
- Pendant
 - On/Off: START and STOP pushbuttons
 - Cable length: 15-feet
- Foot control
 - On/Off: Pedal switch
 - Speed control: Foot operated potentiometer
- Power: 115V, single phase

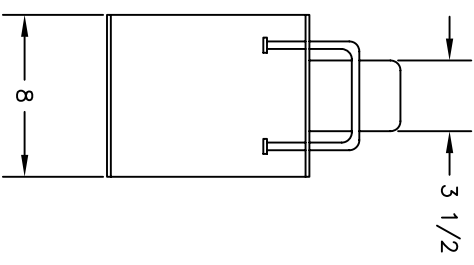
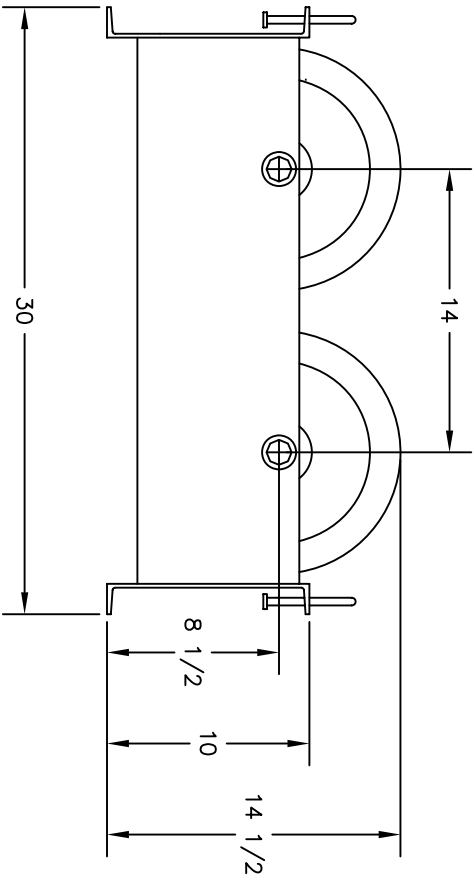
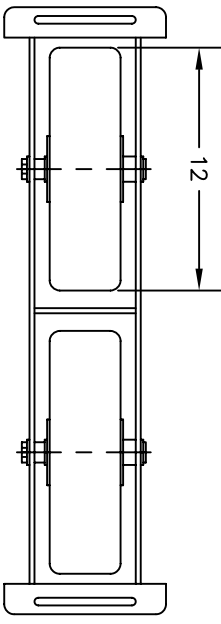
Weight

- Driver: 200 pounds
- Idler: 80 pounds



<p>PRESTON-EASTON INC. OKLAHOMA</p>		<p>DIMENSIONAL OUTLINE</p>	
<p>PROJECT: _____</p>		<p>FILE: FDR-3</p>	
<p>DATE: _____</p>		<p>40089</p>	
<p>DESIGNED BY: _____</p>		<p>DATE: _____</p>	
<p>CHECKED BY: _____</p>		<p>DATE: _____</p>	
<p>DATE: 8-23-96</p>		<p>4/00</p>	

THIS DRAWING AND THE DESIGNS HEREIN ARE THE PROPERTY OF PRESTON-EASTON INC. REPRODUCTION AND/OR USE WITHOUT WRITTEN PERMISSION IS PROHIBITED.



<p>PRESTON-EASTON INC. OKLAHOMA</p>		<p>DIMENSIONAL OUTLINE FIR-3</p>	
<p>DATE: 9-18-80 BY: B.J.K.</p>	<p>40106</p>	<p>1 OF 1</p>	<p>REV. NO.</p>
<p>TULSA</p>	<p>THIS DRAWING AND THE DESIGNS HEREIN ARE THE PROPERTY OF PRESTON-EASTON INC. REPRODUCTION AND/OR USE WITHOUT WRITTEN PERMISSION IS PROHIBITED.</p>	<p>DATE: 10-2-95</p>	<p>REV. NO.</p>